
NO_x RECLAIM WORKING GROUP MEETING

DECEMBER 13, 2018
SCAQMD
DIAMOND BAR, CA

Agenda

- Landing Rule Updates
 - Rule 1146 Series/PR 1100
 - PR 1118.1
 - PAR 1134
 - PR 1109.1
 - PAR 1110.2
 - PAR 113
- New Source Review
 - Discussion of Key Issue #2 – Establishing baselines to determine NSR events

LANDING RULE UPDATES

3

Command-and-Control BARCT Rulemaking Status

**PAR 1146, 1146.1
and 1146.2**



**Boilers, steam
generators, and heaters**

- Public Hearing:
December 2018
- Amendments approved
by the Board

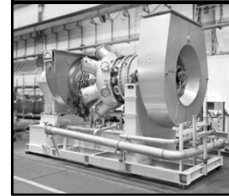
PR 1118.1



Non-Refinery Flares

- Public Hearing:
January 2019

PAR 1134



Gas Turbines

- Public Workshop:
December 18, 2018
- Public Hearing:
April 2019

Command-and-Control BARCT Rulemaking Status

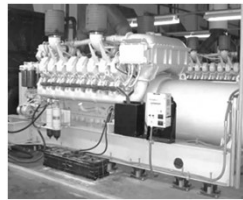
PR 1109.1



Refineries

- Request for Proposal for third party verification of BARCT analysis:
 - Governing Board Approval Release December 7, 2018
- Working Group Meeting held November 28, 2018
- Next Working Group Meeting scheduled for mid-January
- Continuing site visits
- Public Hearing: 2019

PAR 1110.2



Gaseous- and Liquid-Fueled Engines

- Initiated site visits, more to be scheduled
- Sent survey questionnaire
- Public Workshop: 1st Quarter 2019
- Public Hearing: 3rd Quarter 2019

PR 113

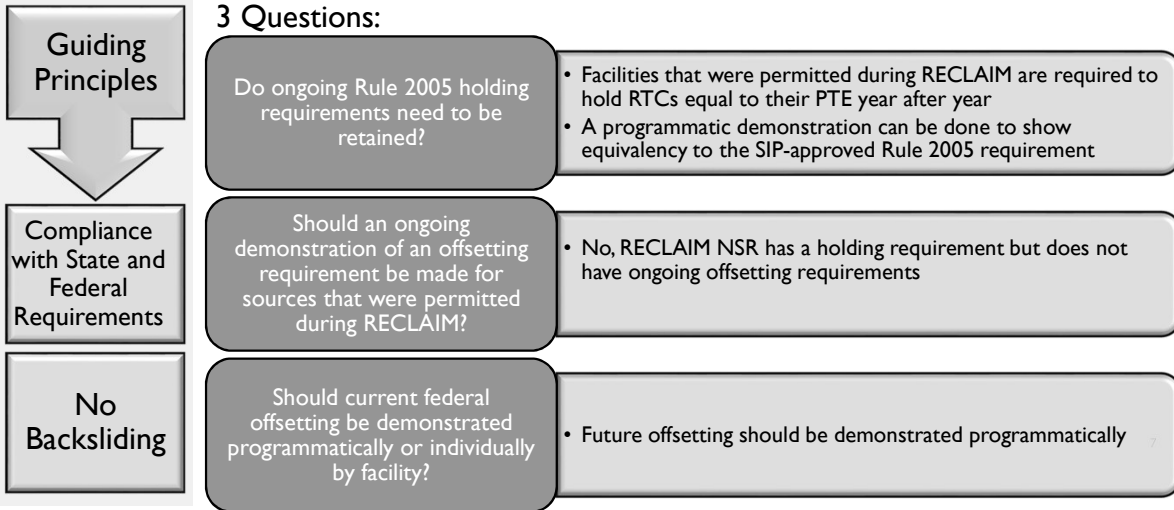


Monitoring, Reporting, and Recordkeeping

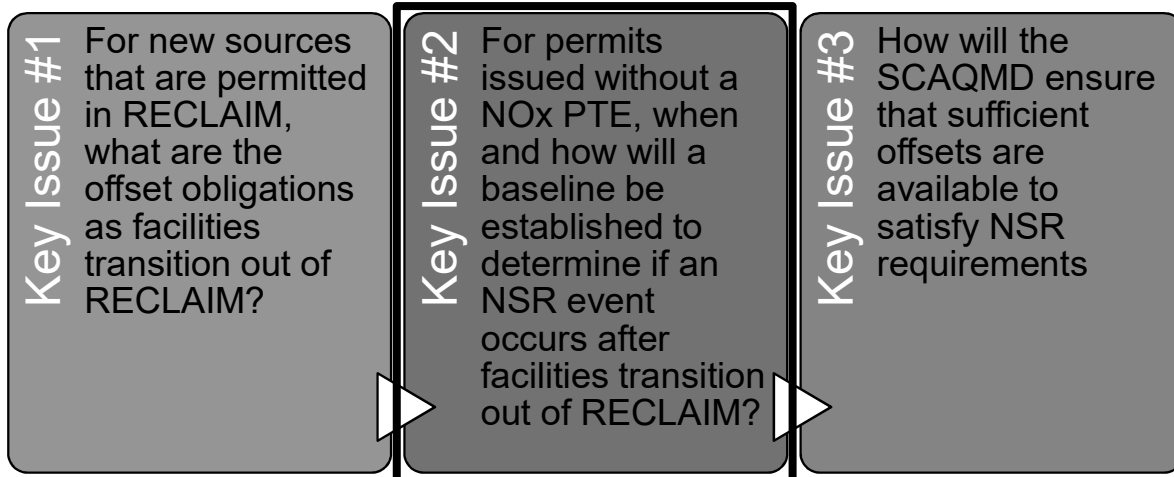
- Integrated MRR requirements for:
 - Former RECLAIM
 - Possibly non-RECLAIM
- Initiated preliminary analysis
- Comparing District and Federal requirements
- Conducted five site visits

UPDATE ON NEW SOURCE REVIEW

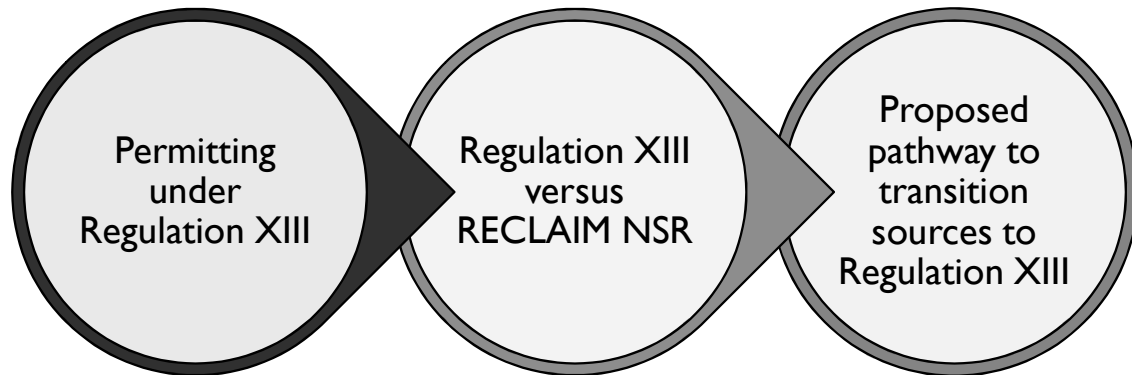
Key Issue #1 Summary (November 8 Working Group Meeting)



Summary of Three Key NSR Issues



Addressing Key Issue #2



9

Permitting Under Regulation XIII

- Regulation XIII is SIP-approved - Applies to the installation of any new source and to the modification of any existing source
- All new and modified permitted sources are reviewed under Regulation XIII
 - Regulation XIII acts as the “gatekeeper” to determine if a permit action results in an emission increase (NSR event)
 - Any emission increase must be offset (e.g., ERCs)
 - BACT and modeling is always required for new and modified sources

10

Permitting Under Regulation XIII *(continued)*

- When a facility submits a permit application for new or modified equipment, it will be evaluated for an emissions increase pursuant to Regulation XIII

- An emission increase would occur if:

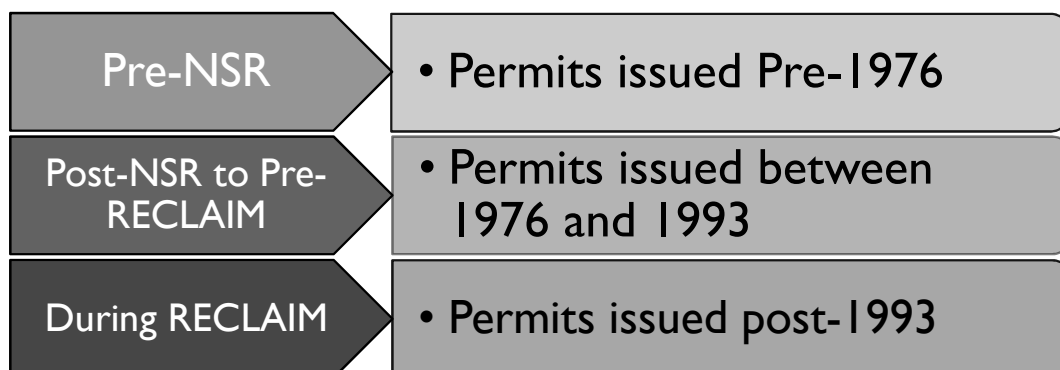
Post-modification PTE (lbs/day) > Pre-modification PTE (lbs/day)

- The emission increase is determined with a baseline PTE specified in **lbs/day**

11

Baseline PTEs Issued for Permits Over Specific Timeframes

- Baseline PTEs in RECLAIM permits depend on when past emission increases occurred



12

Comparison of Non-RECLAIM and RECLAIM PTEs Over Specific Timeframes

	PTEs Non-RECLAIM	PTEs RECLAIM
Permits issued Pre-1976 (Pre-Regulation XIII NSR)	No PTE	Same
Permits issued 1976-1993 (Post-NSR to Pre-RECLAIM)	PTE in lbs/day	Same
Permits issued Post 1993 (During RECLAIM)		PTE lbs/hour
Permits issued Post 1993 (During RECLAIM)		No specified PTE (some cases)

Permits Issued Pre-NSR

Permitted
Pre-NSR

- Sources that have never been subject to Regulation XIII or Rule 213 will have baseline emissions calculated pursuant to existing Regulation XIII provisions
- These sources have never had an NSR event through RECLAIM
- Regulation XIII has an established methodology to calculate emissions increases in lbs/day:

Post-modification PTE – Actual Emissions (lbs/day)

Baseline PTE

14

Permits Issued Post-NSR to Pre-RECLAIM

Permitted
Post-NSR
to Pre-
RECLAIM

- Sources that have been subject to Regulation XIII or Rule 213, but never had an NSR event during RECLAIM
- The baseline PTEs for these source have already been established pursuant to Regulation XIII
- Regulation XIII emission increase calculation in lbs/day:

Post-modification PTE – Pre-modification PTE (lbs/day)

Baseline PTE

15

Baseline Calculations (*continued*)

Permitted
During
RECLAIM

- Sources with emission increases during RECLAIM that have been subject to Rule 2005
- These sources may have:
 - 1) Baseline PTE specified in lbs/day
 - 2) Baseline PTE specified in lbs/hr
 - 3) No specified PTE, only concentration limit
 - 4) No specified PTE or concentration limit
- These baseline PTEs need to be converted to lbs/day to determine emission increases pursuant to Regulation XIII

16

Baseline Calculations *(continued)*

Permitted
During
RECLAIM

- 1) Baseline PTE specified in lbs/day
 - No further action required
- 2) Baseline PTE specified in lbs/hr
 - Use hourly mass limit multiplied by daily throughput limit, if available
 - If not, use 24 hours per day

17

Permits Without Specified PTEs

Permitted
During
RECLAIM

- Some sources that were permitted during RECLAIM do not have specified PTEs in lbs/hr
- No specified PTE, only concentration limit
 - Applies to some large sources and process units
 - Mass rates based on concentration limits
- No specified PTE or concentration limit
 - Applies to some major sources that do not have an hourly mass limit
 - Mass rates based on continuous emissions monitoring systems (CEMS) data

18

Baseline Calculations *(continued)*

Permitted
During
RECLAIM

3) No specified PTE, only concentration limit

- Use the most stringent concentration limit or equivalent concentration from RECLAIM emission factor, multiplied by throughput limit, if available
- If not, maximum throughput limit and 24 hours per day
- NO_x PTE can be back-calculated from another pollutant PTE

19

Baseline Calculations *(continued)*

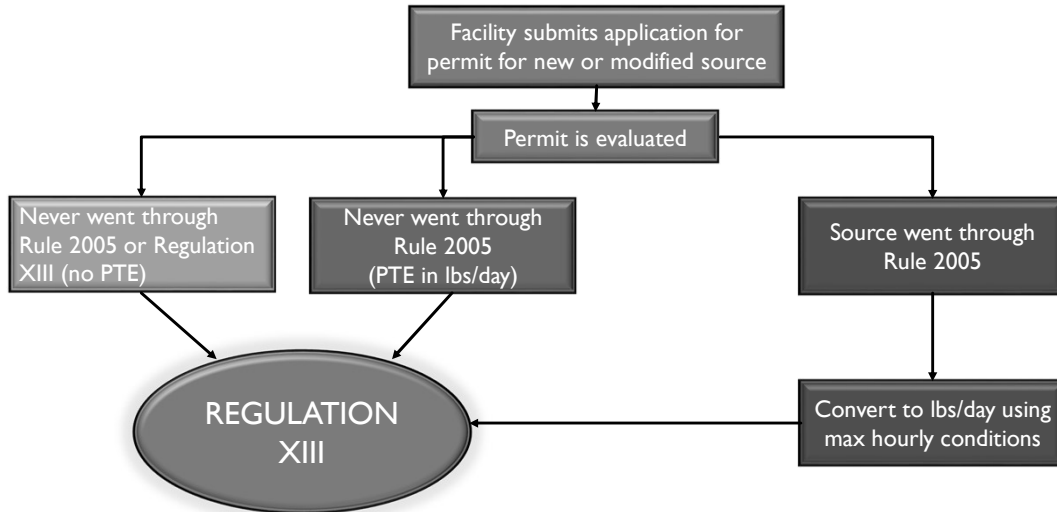
Permitted
During
RECLAIM

4) No specified PTE or concentration limit

- Obtain maximum hourly emission rate from previous 12 month actuals prorated to maximum rated capacity and multiply by throughput limit, if available
- If not, multiply by maximum throughput limit and 24 hours per day
- Emission rate can be obtained from CEMS data

20

Overview of Establishing PTEs



21

When Will Permits Be Evaluated?

- When the facility submits a permit application to install new or modify existing equipment
- RECLAIM facilities will be issued new permits when they exit, but will retain existing NSR limits/conditions until next NSR event

22

Summary

- Baseline calculations will occur when a facility submits a permit application to determine if the facility has an emissions increase
- All permitting actions that result in an emissions increase will be subject to Regulation XIII
 - Baseline PTEs in lbs/hr will be converted to lbs/day
 - There is a baseline calculation methodology that covers all situations (e.g, for equipment without a PTE)
 - SIP-approved Regulation XIII will always be the “gatekeeper”

23

Update of Key Issue #3 - Ensuring Sufficient Offsets

Key Issue #3 How will the SCAQMD ensure that sufficient offsets are available to satisfy NSR requirements

- Discussed at October 2017 and April 2018 Working Group Meetings
 - Discussed concerns for availability of offsets in the open market
 - Discussed possible options for offsets
- Further discussion in subsequent meeting(s)
 - Identify potential sources of offsets after facilities transition out of RECLAIM?

24

NSR – Process Moving Forward

Continuing discussions with USEPA regarding RECLAIM NSR transition

Ensure all NSR, AQMP, and CAA requirements will be met after sunset of RECLAIM program

Weekly calls with EPA

Periodic face-to-face meetings for more extensive discussions

Work with RECLAIM Working Group Meeting

Monthly RECLAIM Working Group Meetings will shift focus towards NSR

Continued discussions with stakeholders

Updates to Stationary Source Committee (SSC)

Quarterly presentation with quarterly RECLAIM update

Monthly written report

25

Contacts

General RECLAIM Questions

- Gary Quinn, P.E.
Program Supervisor
909-396-3121
gquinn@aqmd.gov
- Kevin Orellana
Program Supervisor
909-396-3492
korellana@aqmd.gov

Rules 1146, 1146.1, 1146.2 and Rule 1100

- | | |
|--|---|
| <ul style="list-style-type: none"> • Gary Quinn, P.E.
Program Supervisor
909-396-3121
gquinn@aqmd.gov • Kalam Cheung, Ph.D.
Program Supervisor
909-396-3281
kcheung@aqmd.gov | <ul style="list-style-type: none"> • Lizabeth Gomez
Air Quality Specialist
909-396-3103
lgomez@aqmd.gov • Shawn Wang
Air Quality Specialist
909-396-3319
swang@aqmd.gov |
|--|---|

26

Contacts

Proposed Rule 1109.1

- Heather Farr
Program Supervisor
909-396-3672
hfarr@aqmd.gov
- Sarady Ka
Air Quality Specialist
909-396-2331
ska@aqmd.gov
- Jong Hoon Lee
Air Quality Specialist
909-396-3903
jhlee@aqmd.gov

Proposed Rule 1118.1

- Heather Farr
Program Supervisor
909-396-3672
hfarr@aqmd.gov
- Steve Tsumura
Air Quality Specialist
909-396-2549
stsumura@aqmd.gov

27

Contacts

Rule 1135

- Michael Morris
Planning and Rules Manager
909-396-3282
mmorris@aqmd.gov
- Uyen-Uyen Vo
Air Quality Specialist
909-396-2238
uvo@aqmd.gov

Proposed Amended Rule 1134

- Michael Morris
Planning and Rules Manager
909-396-3282
mmorris@aqmd.gov
- Uyen-Uyen Vo
Air Quality Specialist
909-396-2238
uvo@aqmd.gov

Proposed Amended Rule 1110.2

- Kevin Orellana
Program Supervisor
909-396-3492
korellana@aqmd.gov
- Rudy Chacon
Air Quality Specialist
909-396-2726
rchacon@aqmd.gov

28

Contacts

New Source Review

- Michael Morris
Planning and Rules Manager
909-396-3282
mmorris@aqmd.gov

- Kevin Orellana
Program Supervisor
909-396-3492
korellana@aqmd.gov

- Lizabeth Gomez
Air Quality Specialist
909-396-3103
lgomez@aqmd.gov

- Melissa Gamoning
Assistant Air Quality Specialist
909-396-3115
mgamoning@aqmd.gov

29