



South Coast
AQMD

SOUTH COAST AIR QUALITY MANAGEMENT DISTRICT ANNOUNCEMENTS

www.aqmd.gov

@SouthCoastAQMD    

FOR IMMEDIATE RELEASE: June 30, 2024

MEDIA CONTACT:

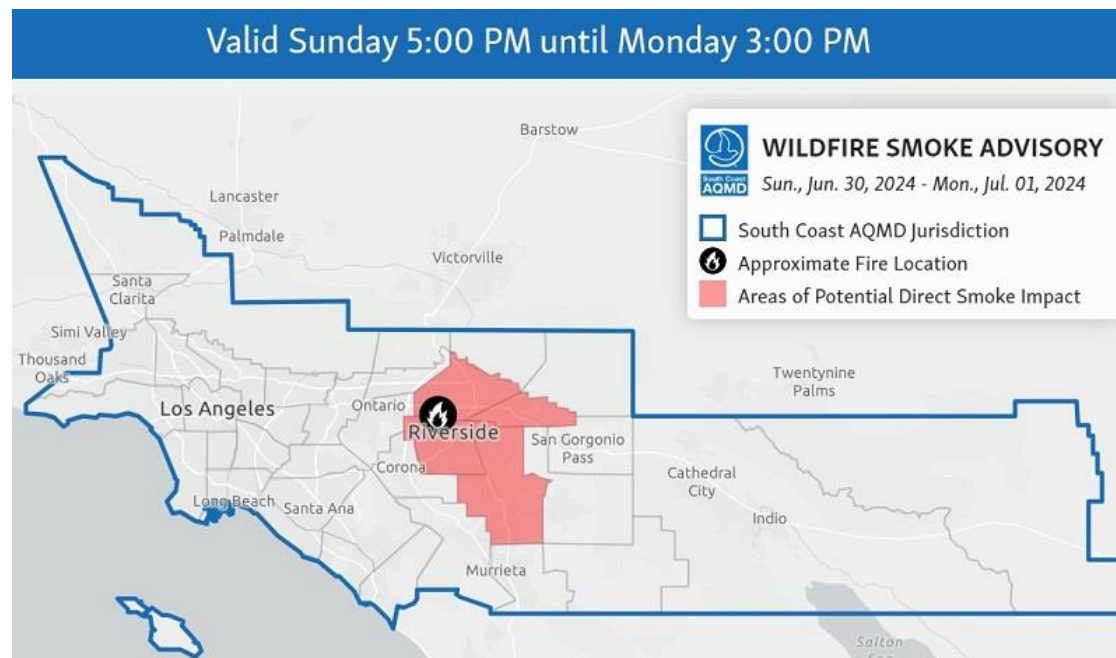
Nahal Mogharabi, (909) 396-3773, Cell: (909) 837-2431

Connie Villanueva, (909) 396-2409, Cell: (909) 215-5601

press@aqmd.gov

South Coast AQMD Issues a Smoke Advisory for the City of Fontana due to Sierra Fire

Valid until Monday 3:00 PM



To view current air quality in your neighborhood, download the [South Coast AQMD app](#) or visit www.aqmd.gov/AQImap.

Current Conditions

- The Sierra Fire is burning north of Highway 60 near Sierra Avenue in Fontana
- As of 4:00 PM on Sunday the fire has burned 50 acres and is 0% contained

- For additional information about the Sierra Fire visit the [CalFire Incident Page](#)
- Based on the live camera footage, smoke from the fire is being blown east towards Fontana and Bloomington on Sunday afternoon

Conditions may change quickly due to fire activity and weather. Download the [South Coast AQMD app](#) or visit www.aqmd.gov/AQImap to view current air quality in your neighborhood.

Forecasted Smoke and Air Quality Impacts

- Smoke from the Sierra Fire will cause elevated PM2.5 levels in parts of San Bernardino County and Riverside County including Fontana, Jurupa Valley, Bloomington, Rialto, and Colton
- Air Quality Index (AQI) may reach **Unhealthy** or higher in areas impacted by smoke
- Air quality may be worse in areas immediately adjacent to the fire

Detailed Forecast

Sunday afternoon	Winds will push smoke from the Sierra Fire to the east and northeast towards Fontana, Bloomington, Rialto, and Colton. AQI may reach Unhealthy or higher in areas impacted by smoke.
Sunday night and Monday morning	Winds will be light. Areas in direct proximity to the fires will likely see the highest particulate matter levels overnight as smoke is likely to remain closer to the ground. AQI levels in Jurupa Valley, Fontana, and Bloomington may reach Unhealthy or higher.
Monday afternoon	Smoke impacts will be heavily dependent on the progress of fire containment efforts. Winds will again push smoke from the Sierra Fire to the east and northeast towards Fontana, Bloomington, Rialto, and Colton. AQI may again reach Unhealthy or higher in areas impacted by smoke.

South Coast AQMD will issue an update if additional information becomes available.

If you are in an area impacted by windblown dust or ash:

- Limit your exposure by remaining indoors with windows and doors closed or seeking alternate shelter.
- Avoid vigorous physical activity.
- Run your air conditioning and/or an air purifier. If possible, do **not** use swamp coolers or whole house fans that bring in outside air.
- Avoid burning wood in your fireplace or firepit and minimize sources of indoor air pollution such as candles, incense, pan-frying, and grilling.

- If you must be outside, a properly fit N95 or P100 respirator may provide some protection.

For more information, visit www.aqmd.gov/smokesafety.

South Coast AQMD is the regulatory agency responsible for improving air quality for large areas of Los Angeles, Orange, Riverside and San Bernardino counties, including the Coachella Valley. For news, air quality alerts, event updates and more, please visit us at www.aqmd.gov, download our award-winning app, or follow us on [Facebook](#), [X](#) (formerly known as Twitter) and [Instagram](#).

###