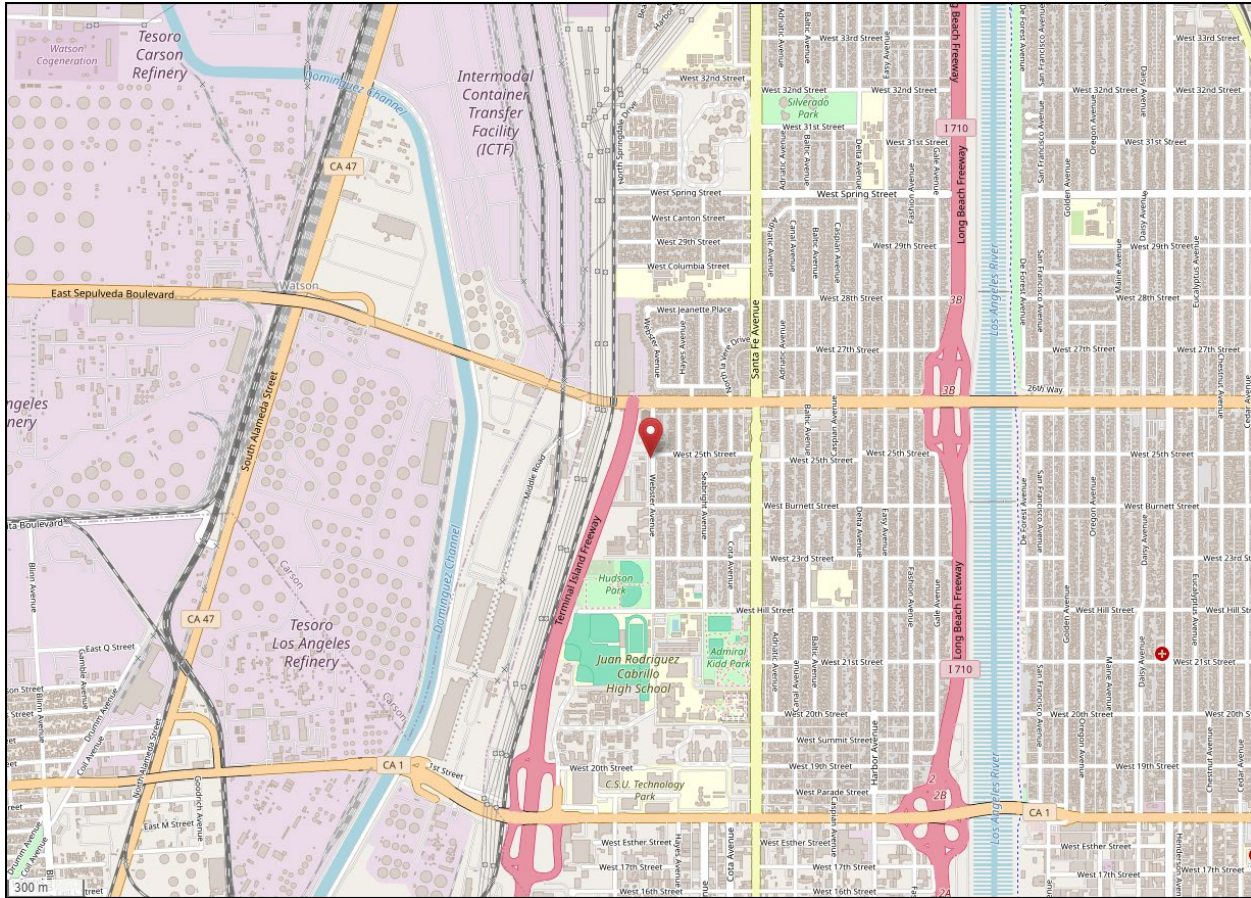


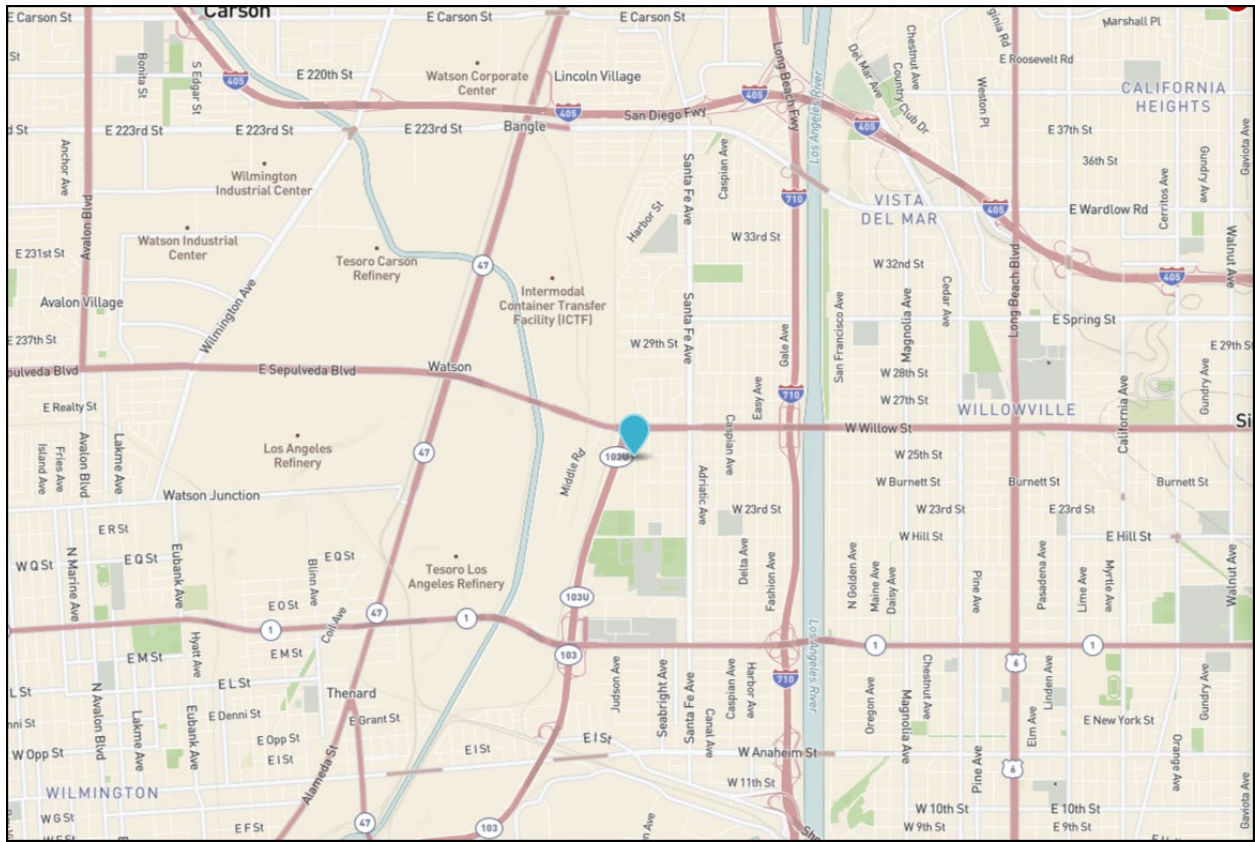
South Coast AQMD Site Survey Report for Long Beach (Hudson)

Last updated: May 7, 2024



AQS ID	ARB Number	Site Start Date	Reporting Agency and Agency Code
060374006	70033	01/2010	South Coast AQMD (061)

Site Address	County	Air Basin	Latitude	Longitude	Elevation
2425 Webster St. Long Beach, CA 90810	Los Angeles	South Coast	33.802417	-118.219933	10



Detailed Site Information

Local site name	Long Beach (Hudson)			
AQS ID	060374006			
GPS coordinates (decimal degrees)	Latitude: 33.802417, Longitude: -118.219993			
Street Address	2425 Webster St. Long Beach, CA 90810			
County	Los Angeles			
Distance to roadways (meters)	9			
Traffic count (AADT, year)	281, 2022			
Groundcover (e.g. asphalt, dirt, sand)	Asphalt			
Representative statistical area name (i.e. MSA, CBSA, other)	31080-Los Angeles, Long Beach-Anaheim MSA			
Pollutant, POC	Continuous PM10, 3			
Primary / QA Collocated / Other	Primary			
Parameter code	81102			
Basic monitoring objective(s)	NAAQS			
Site type(s)	Highest Concentration			
Monitor (type)	SLAMS			
Network Affiliation	N/A			
Instrument manufacturer and model	Met One BAM 1020			
Method code	122			
FRM/FEM/ARM/ other	FEM			
Collecting Agency	South Coast AQMD			
Analytical Lab (i.e., weigh lab, toxics lab, other)	N/A			
Reporting Agency	South Coast AQMD			
Spatial scale (e.g. micro, neighborhood)	Neighborhood			
Monitoring start date (MM/DD/YYYY)	01/2022			
Current sampling frequency (e.g.1:3, continuous)	Continuous			
Calculated sampling frequency (e.g. 1:3/1:1)	N/A			
Sampling season (MM/DD-MM/DD)	01/01-12/31			
Probe height (meters)	4.7			
Distance from supporting structure (meters)	N/A			
Distance from obstructions on roof (meters)	N/A			

Distance from obstructions not on roof (meters)	N/A			
Distance from trees (meters)	N/A			
Distance to furnace or incinerator flue (meters)	N/A			
Distance between collocated monitors (meters)	N/A			
Unrestricted airflow (degrees)	360°			
Probe material for reactive gases (e.g. Pyrex, stainless steel, Teflon)	N/A			
Residence time for reactive gases (seconds)	N/A			
Will there be changes within the next 18 months? (Y/N)	No			
Is it suitable for comparison against the annual PM _{2.5} ? (Y/N)	N/A			
Frequency of flow rate verification for manual PM samplers	N/A			
Frequency of flow rate verification for automated PM analyzers	Monthly			
Frequency of one-point QC check for gaseous instruments	N/A			
Last Annual Performance Evaluation for gaseous parameters (MM/DD/YYYY)	N/A			
Last two semi-annual flow rate audits for PM monitors (MM/DD/YYYY, MM/DD/YYYY)	04/28/2023 10/05/2023			

**Hudson (Long Beach)
Site Photos**



Looking North from the probe.



Looking East from the probe.



Looking South from the probe.

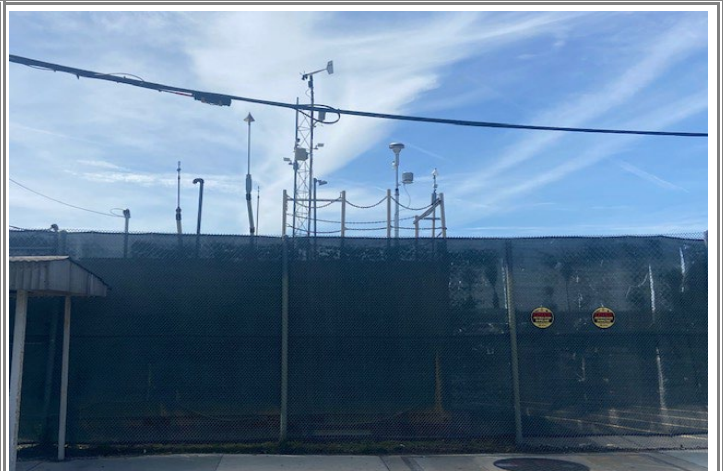


Looking West from the probe.

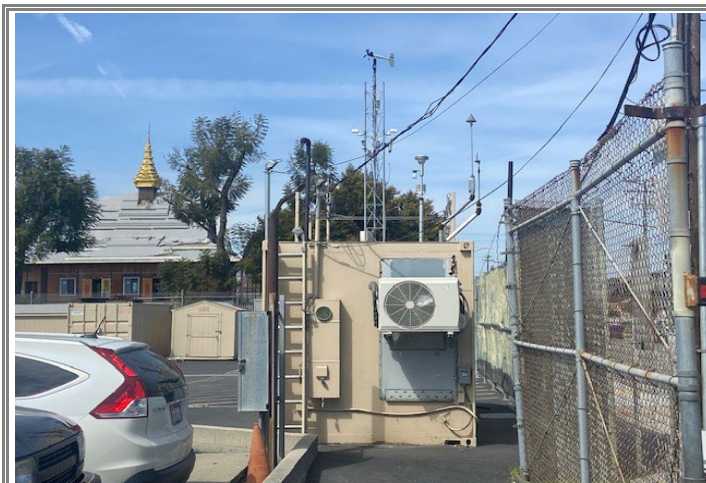
**Hudson (Long Beach)
Site Photos (Cont.)**



Looking at the probe from the North.



Looking at the probe from the East.



Looking at the probe from the South.



Looking at the probe from the West.