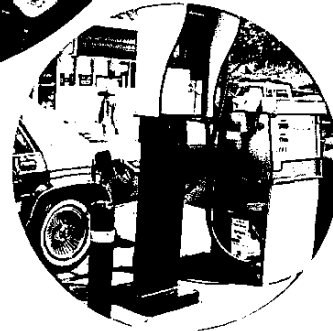
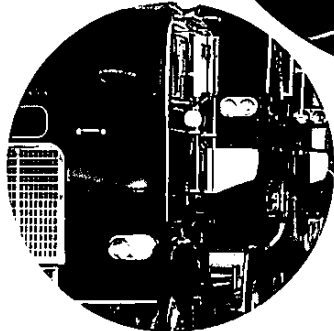
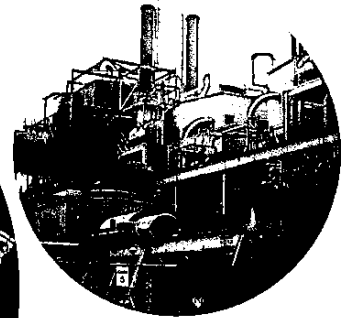
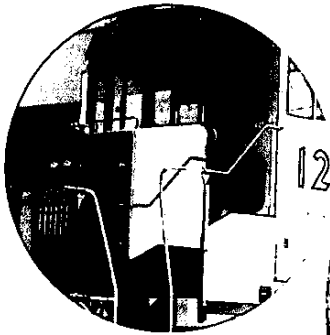
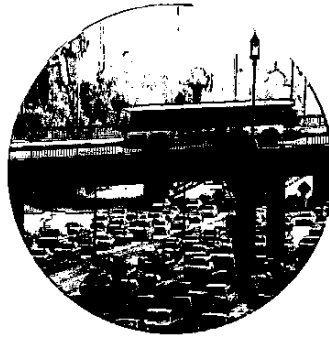


FINAL REPORT – APPENDICES

Multiple Air Toxics Exposure Study
in the South Coast Air Basin

MATES-II



MARCH 2000



South Coast Air Quality Management District



21865 E. Copley Drive
Diamond Bar, CA 91765-2079

SOUTH COAST AIR QUALITY MANAGEMENT DISTRICT

GOVERNING BOARD

CHAIR:

WILLIAM A. BURKE, Ed. D.
Speaker of the Assembly Appointee

VICE CHAIR:

NORMA J. GLOVER
Councilmember, City of Newport Beach
Cities Representative, Orange County

MEMBERS:

MICHAEL D. ANTONOVICH
Supervisor, Fifth District,
Los Angeles County Representative

HAL BERNSON
Councilmember, City of Los Angeles
Cities Representative, Los Angeles County/Western Region

CYNTHIA P. COAD
Supervisor, Fourth District
Orange County Representative

BEA LAPISTO-KIRTLEY
Mayor, City of Bradbury
Cities Representative, Los Angeles County/Eastern Region

JANE W. CARNEY
Senate Rules Committee Appointee

RONALD O. LOVERIDGE
Mayor, City of Riverside
Cities Representative, Riverside County

JON D. MIKELS
Supervisor, Second District
San Bernardino County Representative

LEONARD PAULITZ
Mayor Pro Tem, City of Montclair
Cities Representative, San Bernardino County

S. ROY WILSON, Ed.D.
Supervisor, Fourth District
Riverside County Representative

VACANT
Governor's Appointee

EXECUTIVE OFFICER:

Barry R. Wallerstein, D.Env.

CONTRIBUTORS

The following individuals contributed to the development, implementation, and reporting of this project.

Jack Broadbent
Chung Liu
Deputy Executive Officers

Elaine Chang
Mel Zeldin
Assistant Deputy Executive Officers

Rudy Eden
John Higuchi
Henry Hogo
Mike Nazemi
Managers

Planning, Rule Development & Area Sources

Program Supervisor

Tom Chico
Julia Lester
Satoru Mitsutomi
Susan Nakamura

Air Quality Engineer II

Jim Fakhoury

Senior Meteorologist

Joe Cassmassi

Senior Transportation Specialist

Chris Nelson

Air Quality Specialists

Mark Bassett
Yi-Hui Huang
Bong-Mann Kim
Tuyet-Le Pham
Pierre Sycip
Robert Wu
Xinqi Zhang

Production

Karin Nelsen
Royetta Perry
Maria Schwieterman
Donna Vernon

CONTRIBUTORS

(continued)

Science & Technology Advancement

Principal Chemists

Steve Barbosa

Corie Choa

Senior Chemists

Tai-Ching Hu

Solomon Teffera

Chemists

Tereso Banuelos

Roger Bond

Sam Guo

Phil O'Bell

Ken Sanchez

Paul Williamson

Robert Yi

Meteorologist Technican

Elizabeth Ayers

Principal Instrument Specialists

Mike Agnew

Rene Bermudez

Tom Parsons

Senior Instrument Specialists

George Betzler

Paul Chavez

Steve Kuioka

Dennis Lytle

Steve Waggoner

Sumner Wilson

Instrument Specialist II

Dave Carrillo

Jim Clark

Terry Corcoran

Everett Da Vall

Donald Jacobs

Francisco Lopez

Stephen Perez

Ed Ruffino

David Sawyer

Robert Shaw

Ernesto Taroc

Laboratory Technicians

Malou Cartwright

Sally Gin

CONTRIBUTORS

(continued)

Science & Technology Advancement

General Maintenance Worker

George Contaoi

Temporary Staff

Steve Allardyce

Keith Brown

Cari Eldred

Bill Grant

Leigh Kane

Ricardo Morales

Richard Rogers

Polka RoyChowdhury

Mei Wang

**Appreciation is expressed to the
Monitoring and Laboratory
Division of the California Air
Resources Board for the
extensive laboratory support
provided.**

List of Appendices

Appendix	Title
I-A	List of Toxic Compounds and Their Associated Unit Risk Factors (URF)
I-B	List of Air Toxic Study Technical Review Group (ATSTRG) Members
II	Historical Trends in Toxic Air Contaminants and Cancer Risk in the South Coast Air Basin
III-A	Protocol, Environmental Justice Initiative Number 2 Monitoring and Laboratory Analysis
III-B	Statistical Summary for the MATES-II Fixed Monitoring Sites
IV	1998 Emissions by Major Source Category
V	Air Toxic Regional Modeling
VI	Details of Microscale Study
	Location of Sites
	Wind Roses
	Emissions
	Microscale - Fixed Site Comparisons
	Modeling Results