

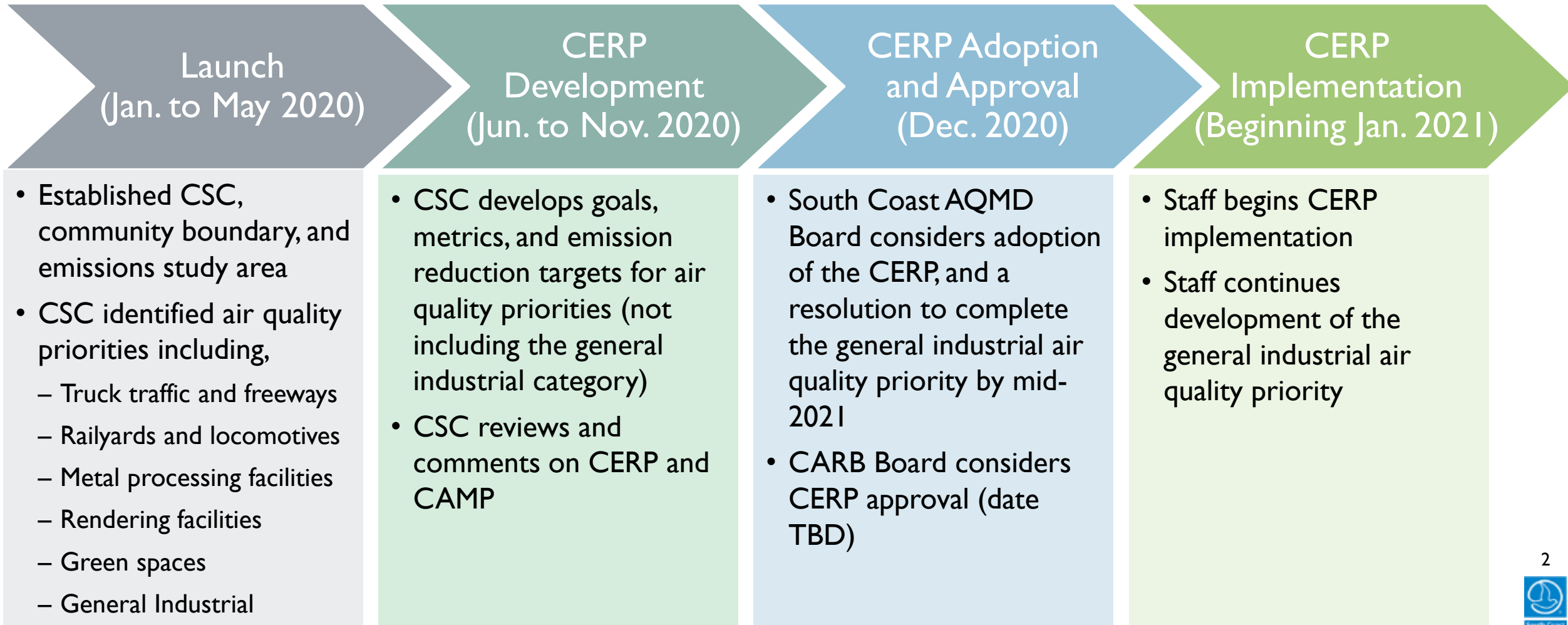
CERP AND CAMP DEVELOPMENT: NEXT STEPS

SOUTHEAST LOS ANGELES CSC MEETING AND WORKSHOP #7
OCTOBER 8TH, 2020

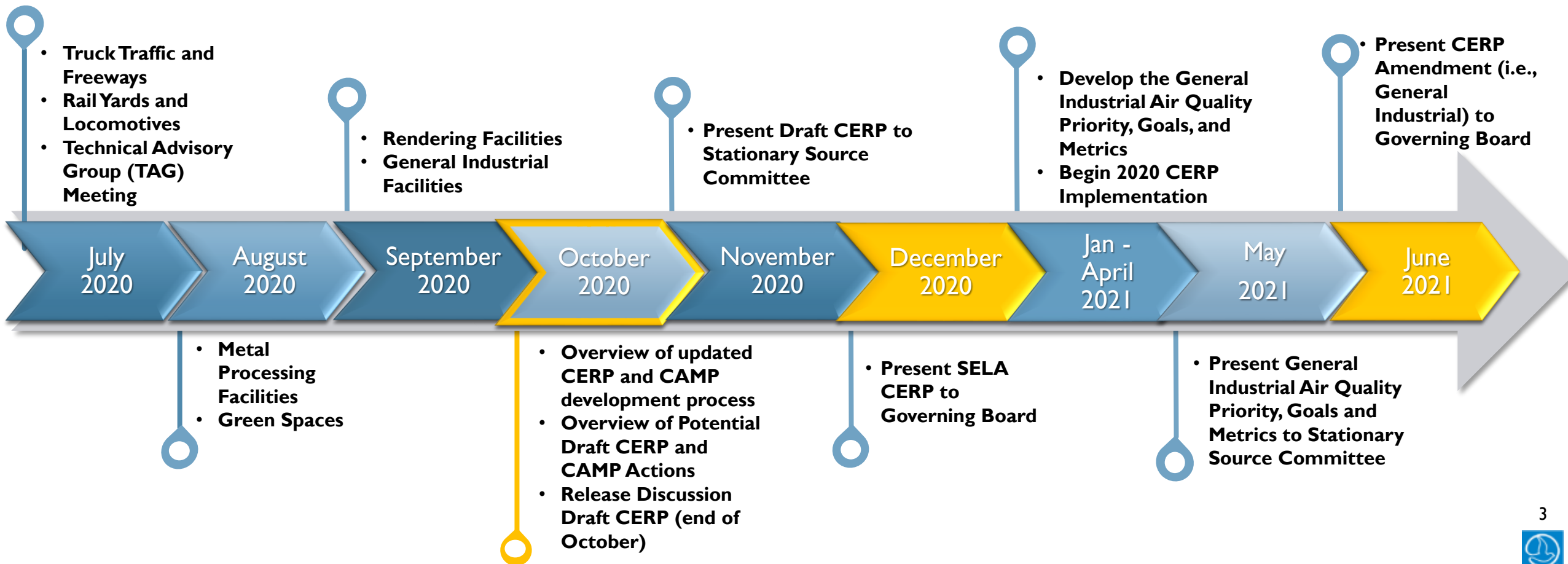


Dianne Sanchez, Ph.D. - Air Quality Specialist

COMMUNITY EMISSION REDUCTION PLAN (CERP) – DEVELOPMENT PROCESS 2020-2021



CERP AND CAMP TIMELINE



DISCUSSION

COMMENTS AND QUESTIONS?



CERP FRAMEWORK

ELEMENTS OF THE CERP

Examples of CERP Goals



Reduce emissions from railyards



Reduce emissions from truck traffic and freeways



Increase green space

Types of CERP Actions



CERP GOALS, ACTIONS, AND METRICS

Description of goals, actions, and metrics

Goal: Quantitative and qualitative targets (e.g., emissions reductions targets and outreach goals)

| Action | Metric | Timeline |
|---|--|---|
| A. Policies developed by the CSC for emissions and exposure reduction | Quantifiable measure used to track and assess the status of an action (e.g., # of idling sweeps per quarter) | Year and/or quarter to begin and complete each action |

Example

Goal: Reduce emissions from truck traffic

| Action | Metric | Timeline |
|---|----------------------------------|--|
| A. Conduct heavy duty truck idling sweeps | One (1) idling sweep per quarter | Begin 2 nd quarter 2021 End 1 st quarter 2022 |

DISCUSSION

COMMENTS AND QUESTIONS?

REVIEW OF AIR QUALITY PRIORITIES AND WORKSHOP COMMENTS

Reduce emissions and address concerns about:



**Truck traffic
and
freeways**



**Railyards and
locomotives**



**Rendering
facilities**



Green spaces



**Metal
processing
facilities**



**General
industrial
facilities**

Air Quality Priority: Truck Traffic and Freeways



Community members would like to address concerns about:

- The I-710 Freeway and potential expansion
- Heavy-duty trucks idling enforcement (*especially near residential and sensitive receptors*)
- Reducing truck routes in SELA community and neighborhood traffic congestion

CSC member suggestions:

- Requiring truck traffic to be on a schedule that avoids peak travel times
- Indirect emission sources from future large warehouses and fulfillment centers
- Zero emission incentives for small businesses and individual truck owners

POTENTIAL ACTIONS TO ADDRESS AIR QUALITY PRIORITIES IN THE DRAFT CERP

Goal: Reduce Emissions from Truck Traffic and Freeways

Actions

- A. CARB to create a “Community Pollution Enforcement Workgroup” to address community complaints and provide community-specific compliance education
- B. CARB to reduce exposure to idling in the community
- Collaborate with South Coast AQMD to conduct quarterly enforcement sweeps, evaluate findings, seek input, and reconsider approach if necessary and report back to CSC periodically
 - Collaborate with land use agencies (e.g., to establish truck routes, local no idling ordinances, parking zoning to move truck parking from local neighborhoods, and greening)
 - Coordinate with South Coast AQMD on “No Idling” signs

POTENTIAL ACTIONS TO ADDRESS AIR QUALITY PRIORITIES IN THE DRAFT CERP

Goal: Reduce Emissions from Truck Traffic and Freeways (*continued*)

Actions

- C. Continue to develop Warehouse Indirect Source Rule to reduce emissions from large warehouses and fulfillment centers
- D. Provide incentive funds for small businesses (e.g., independent truck owners and operators), including zero emission trucks

Goal: Reduce Catalytic Converter Theft in SELA

Actions

- E. CARB to pursue a catalytic converter theft deterrence program

Railyards and Locomotives



Community members would like to address concerns about:

- Emissions from older locomotives and railyard equipment
- Locomotive idling

CSC member suggestions

- Replace older equipment with zero emissions technology
- Strengthen rules around idling locomotives and impose fines that would fund local mitigation efforts
- Strengthen enforcement around railyards
- Require air monitoring inside railyards

POTENTIAL ACTIONS TO ADDRESS AIR QUALITY PRIORITIES IN THE DRAFT CERP

Goal: Reduce Emissions from Railyards and Locomotives

Actions

- A. Conduct air monitoring around railyards and in the community to assess how railyard related emissions may contribute to the overall air pollution burden in this community
- B. Use information collected from air monitoring to identify potential strategies to reduce emissions from railyards and the Alameda Corridor
- C. Continue the development of the Railyard Indirect Source Rule
- D. CARB to prioritize the Southeast Los Angeles community for enforcement of the Cargo Handling Equipment Regulation
- E. Through the development of the Railyard Indirect Source Rule and incentives pursue the replacement of diesel-fueled equipment at railyards with lowest emissions technology available (e.g., replace diesel-fueled yard trucks with lowest or zero-emission yard trucks and replace locomotives with lowest emission locomotives)

Air Quality Priority: Metal Processing Facilities



Community members would like to address concerns about:

- Hexavalent chromium emissions
- Metal recycling plant emissions
- Metal dust, odors, and noise

CSC member suggestions:

- Air monitoring around metal processing facilities and provide data to the public
- Reduce emissions from metal processing facilities in SELA community by 25% over 3 years
- Simplified explanation of metals-related rules for the community

POTENTIAL ACTIONS TO ADDRESS AIR QUALITY PRIORITIES IN THE DRAFT CERP

Goal: Reduce Emissions from Metal Processing Facilities

Actions

- A. Conduct public outreach using plain language materials explaining metals-related rules for the community and related facilities (e.g., informational workshops)
- B. Work with the CSC to identify all metal processing facilities within the Southeast Los Angeles emissions study area, provide a list of South Coast AQMD rules applicable to the metal processing facilities identified, provide a two (2) year compliance history of the facilities, and summarize air monitoring data collected at or near facilities
- C. Based on the information from Action B above, work with the CSC to prioritize sources of metal emissions for further investigation (e.g., conducting air monitoring and follow-up compliance investigations, as appropriate), and identify potential strategies for regulatory or other improvements
- D. Based on monitoring data and compliance investigations, evaluate the need for additional facility requirements, incentives or other changes

Green Spaces



Community members would like to address concerns about:

- Increasing green spaces in the SELA community

CSC member suggestions:

- Conduct tree planting
- Establish school gardens
- Install tree buffers near freeways
- Install greenways or tree canopy covers over bike trails
- Facility noncompliance to result in fines that fund community green spaces

POTENTIAL ACTIONS TO ADDRESS AIR QUALITY PRIORITIES IN THE DRAFT CERP

Goal: Increase Green Space in SELA

Actions

A. Collaborate with land-use agencies, state and local agencies, and non-profits to:

- Conduct tree planting
- Establish school gardens
- Install vegetative buffers near freeways
- Install greenways or tree canopy covers over bike trails
- Pursue other efforts to add green spaces to the community

B. Evaluate opportunities to establish a settlement fund to support community green spaces

Rendering Facilities



Community members would like to address concerns about

- Unpleasant odors, especially around schools

CSC member suggestions

- Developing stronger standards for smells that come from rendering facilities beyond Rule 415
- Fining facilities for violating regulations
- Notification system on rendering odor events for schools & daycares
- Additional enforcement including total vapor capture to prevent ongoing public nuisance at rendering facilities while Rule 415 goes into effect

POTENTIAL ACTIONS TO ADDRESS AIR QUALITY PRIORITIES IN THE DRAFT CERP

Goal: Reduce Odors from Rendering Facilities

Actions

- A. Engage in community outreach and provide information on Rule 415 and how to file odor complaints
- B. Conduct air monitoring for VOCs and odorous compounds near each rendering facility and in the community, and make the data available to the public
- C. Continue complaint response and provide timely updates to complainants, continue Rule 415 compliance inspections and provide an annual summary of findings
- D. After the installation of emissions controls (e.g., permanent total enclosures) required by Rule 415 work with the CSC to identify remaining odor concerns, evaluate (e.g., conduct additional air monitoring for VOCs and odorous compounds) the need for additional requirements to address odors, and establish a rule development schedule, if needed

Goal: Reduce Exposure to Odors from Rendering Facilities

Action

- E. Explore the possibility of an odor event notification system, particularly for schools and sensitive receptors

DISCUSSION

COMMENTS AND QUESTIONS?

AB 617 – 2020 COMMUNITY STEERING COMMITTEE SCHEDULE (SELA)

| | | | |
|----------------------------------|--|--------------------|---|
| January 9, 2020 | Community Kick-off Meeting Salt Lake Park (Huntington Park) 6:00 – 8:30 pm | August 27, 2020 | Workshop and Community Steering Committee Meeting Virtual Meeting 4:00 – 6:00 pm |
| February 6, 2020 | Community Steering Committee Meeting Ross Hall at Veterans Park (Bell Gardens) 6:00 – 8:30 pm | September 17, 2020 | Workshop and Community Steering Committee Meeting Virtual Meeting 4:00 – 6:00 pm |
| March 12, 2020 and April 9, 2020 | Community Steering Committee Meetings – Postponed | October 8, 2020 | Community Steering Committee Meeting Virtual Meeting 4:00 – 6:00 pm |
| May 7, 2020 | Community Steering Committee Meeting Virtual Meeting 4:00 – 6:00 pm | October 29, 2020 | Community Steering Committee Meeting Virtual Meeting 4:00 – 6:00 pm (NEWLY ADDED) |
| June 11, 2020 | Community Steering Committee Meeting Virtual Meeting 4:00 – 6:00 pm | November 5, 2020 | Community Steering Committee Meeting Virtual Meeting 4:00 – 6:00 pm |
| July 23, 2020 | Workshop and Community Steering Committee Meeting Virtual Meeting 4:00 – 6:00 pm | | |