

AB 617 - SELA

COMMUNITY STEERING COMMITTEE
QUARTERLY MEETING #2 (2023)

VIRTUAL MEETING

JUNE 22, 2023

Gina Triviso
Senior Public Affairs Specialist



SELA CSC 2023

Member Updates



AB 617 – 2023 COMMUNITY STEERING COMMITTEE SCHEDULE (SELA)

March 23, 2023	Community Steering Committee Meeting 4 to 6 pm	September 21, 2023	Community Steering Committee Meeting 4 to 6 pm
June 22, 2023	Community Steering Committee Meeting 4 to 6 pm	November 16, 2023	Community Steering Committee Meeting 4 to 6 pm

COMMUNITY LIAISON

Southeast Los Angeles (SELA)

<http://www.aqmd.gov/nav/about/initiatives/environmental-justice/ab617-134>

Gina Triviso

Sr. Public Affairs Specialist

gtriviso@aqmd.gov

(909) 396-2957

General AB 617 inquiries:

ab617@aqmd.gov



Catalytic Converter Theft Deterrence and Information

Southeast Los Angeles Community Steering Committee

June 22, 2023

What Was the Process?

- SELA CSC workgroup partnered with CARB and South Coast AQMD
- Research
- 1 pager
- Easier to understand and distribute



What's in The Document?

- Alarming theft statistics
- Precious metals
- Converters are important
- What to do if stolen
- Deterrents: Garage!
 - Etching
 - Locks/straps
 - Shields
 - Heat proof paint
 - Lights and cameras



Catalytic Converter Theft Deterrence and Information

Communities throughout California, and throughout the country, are facing a significant increase in catalytic converter theft at an alarming rate.

- The National Insurance Crime Bureau tracked a four-fold increase in monthly thefts from 2019 to 2020¹.
- Between March 2020 and December 2020, the Los Angeles Police Department's West Bureau saw a 320 percent increase in catalytic converter thefts as compared to the year before².

Why are catalytic converters being stolen?

Catalytic converters contain precious metals that include palladium, platinum, and rhodium. To put their value in perspective: gold is worth about \$2,000 an ounce, whereas rhodium is in the \$13,000-\$15,000 range, palladium in the \$2,000 - \$3,000 range and platinum about \$1,000 an ounce.

Why is it important to have to have a catalytic converter?

Catalytic converters reduce harmful emissions from vehicles and have been used to meet clean air standards since the mid-1970s. Inside a catalytic converter, the exhaust flows through a honeycomb structure containing these precious metals. Multiple chemical reactions take place inside a catalytic converter to convert unhealthy compounds to less harmful compounds.



What do I do I if my catalytic converter is stolen?

If you see someone stealing your catalytic converter, do not attempt to engage the thief, instead call the police immediately. If you notice that your catalytic converter has been stolen, have a trusted mechanic inspect the other exhaust components for damage before replacing the catalytic converter.

Potential deterrents

It only takes a thief a few minutes to steal a catalytic converter. with most thefts occurring during

Who Reviewed the Document?

- Los Angeles Police Department
- Bureau of Automotive Repair
- CARB - Enforcement Division
- Air District
- SELA Community Steering Committee

What's Next?

- CSC comments
- New regulations
- Outreach and distribution
- Websites and social media

COMMUNITY EMISSIONS REDUCTION PLAN (CERP) IMPLEMENTATION

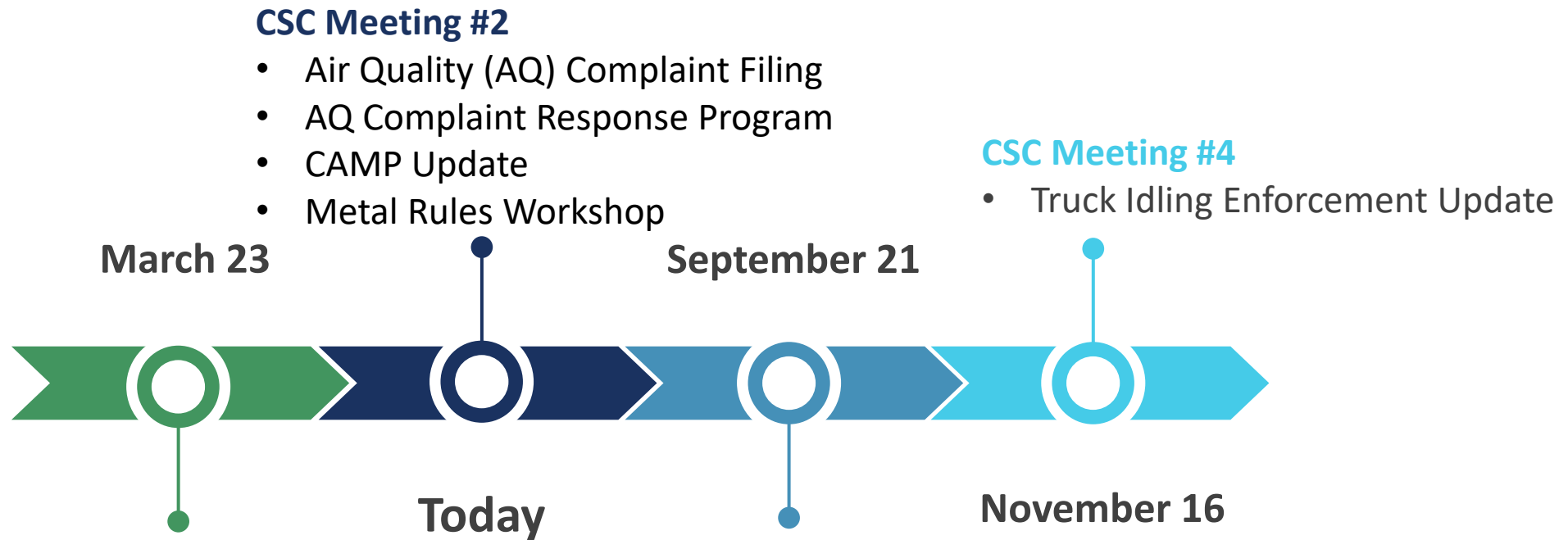
2023 SOUTHEAST LOS ANGELES (SELA) COMMUNITY STEERING COMMITTEE (CSC)
QUARTERLY MEETING #2

JUNE 22, 2023



Nish Krishnamurthy, Ph.D. – Acting Program Supervisor

2023 SELA CSC MEETING TIMELINE



CSC Meeting #2

- Air Quality (AQ) Complaint Filing
- AQ Complaint Response Program
- CAMP Update
- Metal Rules Workshop

CSC Meeting #4

- Truck Idling Enforcement Update

CSC Meeting #1

- Incentives Programs
- F.I.N.D. Tool
- Green Spaces
- Community Air Monitoring Plan (CAMP) Update

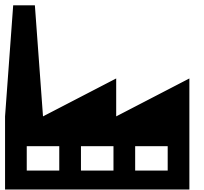
CSC Meeting #3



FILING AIR QUALITY COMPLAINTS ONLINE AND RESPONSE

GENERAL INDUSTRIAL FACILITIES – BACKGROUND

- Chapter 5h – General Industrial, Action C*
 - **Goal:** Reduce emissions from general industrial facilities
 - **Action:** Conduct outreach on filing air quality complaints through a variety of methods
- **Objective:** Provide training on how to file air quality complaints by phone, webpage, or mobile app and overview of South Coast AQMD's complaint response



* <http://www.aqmd.gov/docs/default-source/ab-617-ab-134/steering-committees/southeast-los-angeles/final-cerp/final-cerp.pdf?sfvrsn=9#page=124>

REPORTING COMPLAINTS

JUNE 22, 2023



South Coast AQMD
Information Management
Brian Roche

WHY REPORT A COMPLAINT?

- Odors
- Dust
- Open Burning
- Asbestos
- Smoke
- Gasoline Dispensing
- Residential Wood Burning
- Paint Overspray
- Other (Unpermitted Business, Unregulated Sources)

HOW TO REPORT A COMPLAINT

- I-800-CUT-SMOG (I-800-288-7664)
- South Coast AQMD Website (www.aqmd.gov)
- South Coast AQMD Mobile Application

SOUTH COAST AQMD WEBSITE

Select Language ▾

F.I.N.D. ▾

About ▾

Contact

Grants & Bids ▾

Online Services ▾

I'm Looking For ▾

Sign Up ▾

Search



AIR QUALITY

INCENTIVE PROGRAMS

RULES & COMPLIANCE

PERMITS

NEWS, WEBCASTS, & CALENDAR

TECHNOLOGY ADVANCEMENT

RESOURCES

MEETING AGENDAS & MINUTES

South Coast AQMD



Air Quality Investigations

Visit our Community Investigations page for information on South Coast AQMD activities in response to air quality incidents in local communities

Learn more



Community Investigations

Air Quality Investigations

Reducing air pollution in EJ communities
AB 617

Yard Equipment Incentives & Rebates
Electric Lawn & Garden Equipment Programs

AQ-SPEC
Air Quality Sensor Performance Evaluation Center

3

Alerts



Ethylene Oxide (EtO) Emissions Investigation



South Coast AQMD is conducting special air monitoring to assess Ethylene Oxide emissions



Rebates / Incentives



Air Quality



Report a Complaint



Facility Information (F.I.N.D)



Calendar



Download the App

COMPLAINT FORM



South Coast
Air Quality Management District

Complaint Reporting System

New Complaint

Track Complaint

Welcome to the South Coast Air Quality Management District's On-line Complaint Reporting System. **Air Quality complaints can also be reported by calling 1(800)CUT-SMOG or 1(800)288-7664.**

Your Information

[About Your Privacy](#)

Fields marked with * are required, others are optional.

Phone : () *

Email : *

First Name :

Last Name :

Street Name :

City :

Zip :

Remember Me (Be sure to uncheck this box if you are using a public computer so that other users cannot view your information)

Complaint Details

Please describe in detail the air quality problem you've experienced. It's important to let AQMD know the date and time when you first detected the problem, and if the problem is continuing when you report it.

Complaint Type : *

Description : * [Help](#)

Date detected : *

Time Detected : : AM PM

Business Name (if known):

Street Name / Cross Street : *

City : *

Zip :

Attach a picture or video to this complaint : No file chosen
(Supported formats include jpg, mov, and avi.) [Help](#)



Generate New Image

Type the code from the image

CONFIRMATION PAGE



South Coast
Air Quality Management District

Complaint Reporting System

[New Complaint](#)

[Track Complaint](#)

Complaint Confirmation

Thank you for submitting a complaint. We may contact you if additional information is needed. Please note your complaint number below as you will need it to track the status of your complaint.

Complaint No: 283744

Your Information :

Name : **BRIAN R**

Address : **DIAMOND BAR,CA**

Phone Number : **909-3963238**

Email : **brexample@email.com**

Complaint Details :

Complaint Type : **ASBESTOS**

Description : **ASBESTOS COMPLAINT**

When did you detect it : **6/8/2023 12:00:00 AM**

Reported Source Name : **UNKNOWN**

Source Address : **MAIN ST, LOS ANGELES, CA**

[Printer Friendly Version](#)



APPLICATION FEATURES



Detailed Monitor Data

Real-time Localized
Air Quality Information

Connect with
South Coast AQMD

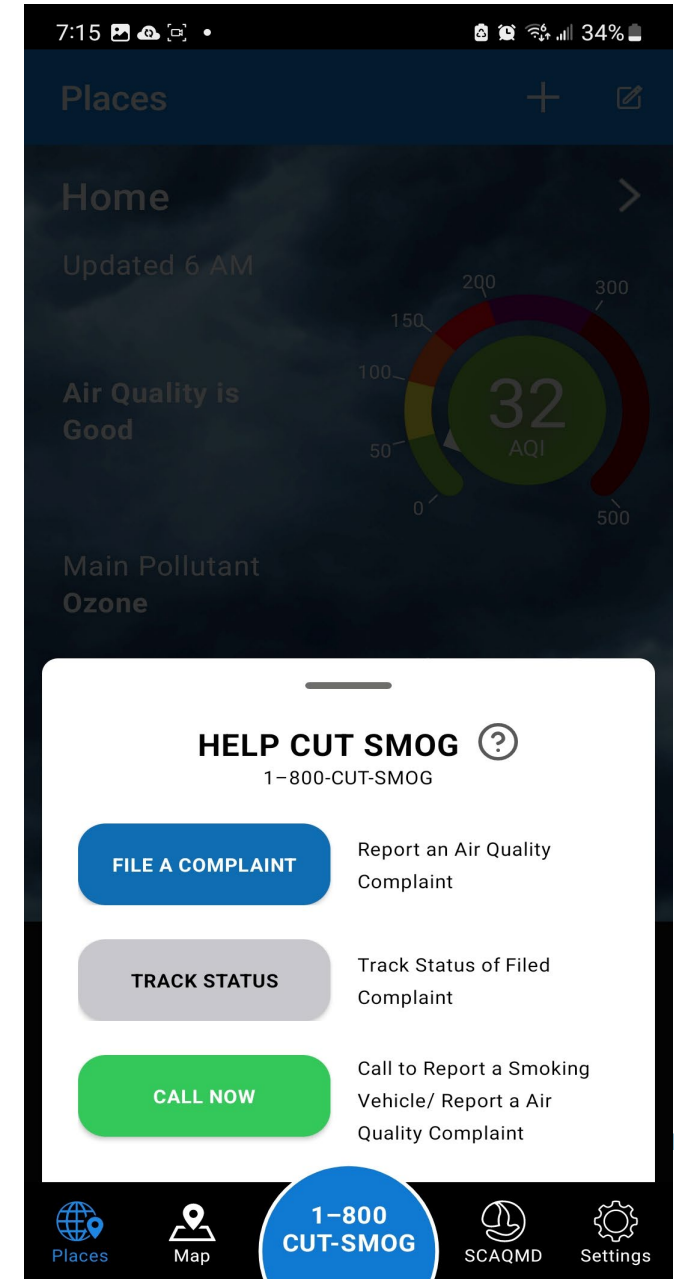
SOUTH COAST AQMD MOBILE APP

- Interactive Air Quality Map
- Real-Time Localized Air Quality Information
- Fully-translated to Spanish
- Forecasted Air Quality
- Configurable Notifications
- Alternative Fuel Stations
- Locate Facilities
- File a Complaint

MOBILE APP HOME PAGE

Click the Blue Button:
1-800-CUT-SMOG

- File a Complaint
- Track Complaint Status
- Call 1-800-CUT-SMOG



REPORT A COMPLAINT

7:20 33%

File a Complaint Cancel

YOUR INFORMATION COMPLAINT DETAILS

Fields marked with * are required, others are optional

South Coast AQMD maintains complainant personal information, such as name, address and telephone number, as confidential, to the extent allowed by state and federal law. Such information may only be released under very limited and unique circumstances, if required by the California Public Records Act or if requested under a subpoena or used in court proceedings.

Email Address *

myemail@email.com

Phone*

909-123-4567

First Name (Max: 25 characters)

Jim

22 characters left

Last Name (Max: 25 characters)

Smith

20 characters left

Street Name (Max: 80 characters)

567 Grand St

7:20 33%

File a Complaint Cancel

YOUR INFORMATION COMPLAINT DETAILS

909-123-4567

First Name (Max: 25 characters)

Jim

22 characters left

Last Name (Max: 25 characters)

Smith

20 characters left

Street Name (Max: 80 characters)

567 Grand St

68 characters left

City

Los Angeles

Zip

90005

Would you like to save your contact information?

CLEAR

NEXT

7:23 32%

File a Complaint Cancel

YOUR INFORMATION COMPLAINT DETAILS

Complaint Type*

Odors

Odor Type* ?

Burnt Rubber

Odor Strength*

Strong Odor

Odor Persistence (Max: 50 characters) * ?

When you detect the odor, is it constant or does it come and go?

Constant

42 characters left

Odor Frequency (Max: 50 characters) * ?

All day long.

37 characters left

Date*

5/11/2023

Time

7:23 AM

REVIEW AND SUBMIT

7:25 [status icons] 32%

File a Complaint Cancel

YOUR INFORMATION **COMPLAINT DETAILS**

Business Name (Max: 40 characters)

Street Name / Cross Street (Max: 80 characters)*
Grand St

72 characters left

City*
Los Angeles

Zip
90005

Attach a picture to this complaint.

Tap Here

You can attach up to 2 images

CLEAR NEXT

7:25 [status icons] 32%

Complaint Review Cancel

Please verify the information is correct before submitting your complaint.

Contact info
Email : **myemail@email.com**
Phone Number : **(909) 123-4567**
Name : **Jim Smith**
Street Address: **567 Grand St**
City : **LOS ANGELES**
Zip : **90005**

Complaint Type: **ODORS**
Description: **Burnt Rubber | Strong Odor | Constant | All day long.**
Date : **5/11/2023**
Time : **7:23 AM**
Business Name:
Street Address: **Grand St**
City : **LOS ANGELES**
Zip : **90005**

BACK SUBMIT

REPORTING COMPLAINTS

- www.aqmd.gov
- www.aqmd.gov/mobileapp
- I-800-CUT-SMOG

Questions/Comments:

Brian Roche

Broche@aqmd.gov



South Coast AQMD Complaint Response Program

Victor Yip
Assistant Deputy Executive Officer
Compliance & Enforcement



Reporting Air Quality Issues



Complaint Types

- Asbestos
- Dust
- Gasoline Dispensing
- Odors
- Open Burning
- Paint Overspray
- Residential Wood Burning
- Smoke
- Truck Idling
- Other





Air Quality Complaints Received Across South Coast AQMD



2000 through 2022



How To File A Complaint

There are
3 ways
to file:



Call 1-800-CUT-SMOG
(1-800-288-7644)



Visit www.AQMD.gov/Complaints



**Use the South Coast AQMD
Mobile App**

Download the app here



How To File A Complaint (cont.)

**Please
have
ready:**



Date and time of air quality event



Type of air quality event:
odors, dust, asbestos, smoke, etc.



Odor description:
gas, chemical, rotten eggs, etc.



Address or location of suspected source



Complaint Reporting System

- South Coast AQMD accepts air quality complaints 24 hours a day, 7 days a week
- During business hours (7:00 am – 5:30 pm, Tuesday through Friday) your call is answered by a staff member
- All complainant information remains confidential
- Complaints can be made anonymously, but in these cases, inspectors cannot contact the complainant for additional details or to advise them of investigation findings
- **Staff responds to all complaints**



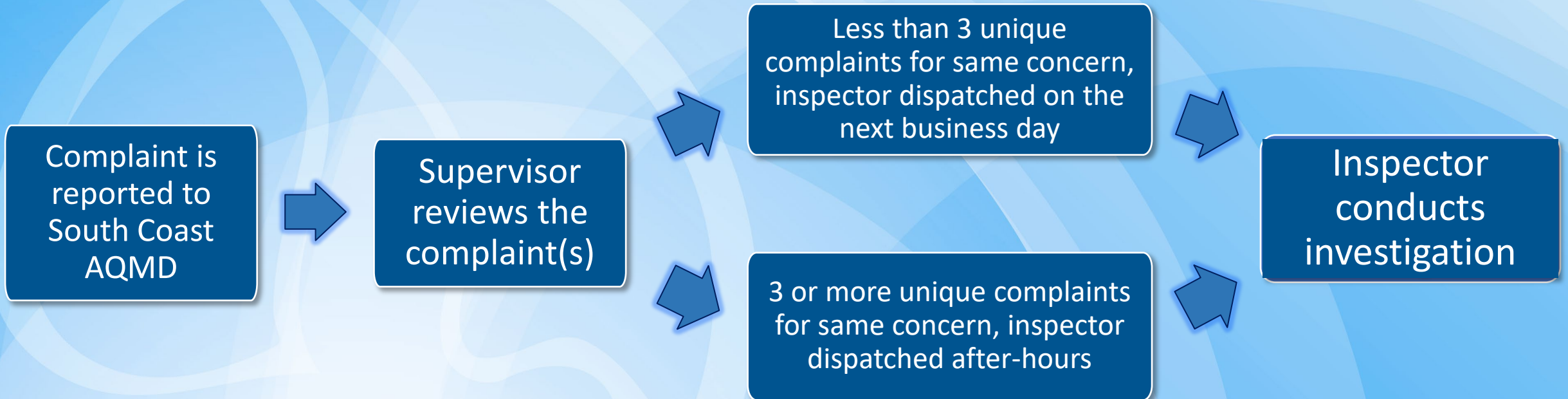
Complaint Response Process

**DURING BUSINESS HOURS:
(Tuesday to Friday 7:00 AM to 5:30 PM)**



Complaint Response Process

DURING AFTER-HOURS:





Complaint Investigation

- Discussion with the complainant to obtain additional information
- Surveillance of the alleged source
- If source is unknown, investigate any potential sources
- If a source is confirmed, conduct an on-site inspection
- Enforcement action as necessary (Notice to Comply and/or Notice of Violation)
- Follow-up with complainant on results of investigation



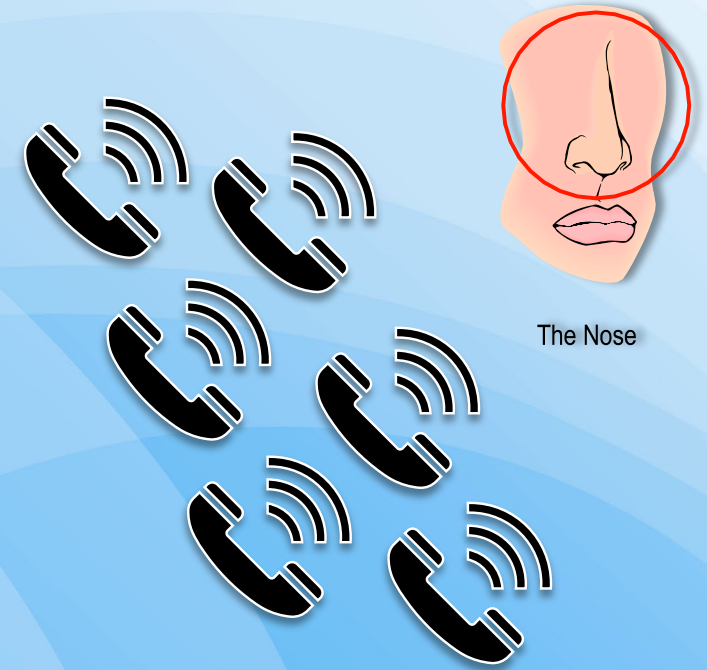
Odor Complaints

The Challenge of Confirming an Odor Nuisance



Wind:

- Blowing downwind from facility toward complainant





Questions?

Compliance and Enforcement Contacts

Victor Yip
Assistant Deputy Executive Officer
(909) 396-2465
vyip@aqmd.gov

Yazmin Kakishita
Program Supervisor
(909) 396-3207
ykakishita@aqmd.gov



CAMP IMPLEMENTATION UPDATE

MOHAMMAD SOWLAT, Ph.D.

Air Quality Specialist

msowlat@aqmd.gov



CERP COMMITMENTS

METAL PROCESSING FACILITIES

■ Chapter 5e, Action E

Conduct air monitoring to help identify elevated levels of air toxic metals and support efforts to identify potential sources of emissions



■ Target Pollutants

Particles or dust, especially dust containing metals, such as:

- lead, arsenic, chromium, copper, nickel
- these metals are classified as toxic air contaminants (TAC), or air toxics

SOURCES OF AMBIENT METALS IN PARTICULATE MATTER

Natural



Resuspended
Dust



Wildfires

Man-
made



Industry



Traffic



Fireworks

CAMP STRATEGY

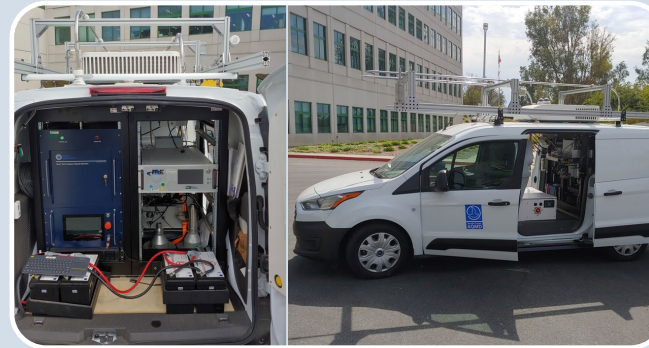
METAL-PROCESSING FACILITIES



Fixed-Site Monitoring

Objectives

- Provide real-time data in the community
- Track progress
- Support CERP



Mobile Monitoring Surveys

Objectives

- Identify areas with persistent elevated levels
- Assess community impact
- Support CERP



*Under Development

Follow-up Monitoring (Source Characterization)

Objective

- Characterize emissions & exposure near facilities
- Support CERP



Fixed-Site Monitoring

Objective

- Provide real-time data to the community
- Track progress
- Support CERP



This metal monitor measures concentrations of several metals, including air toxics such as arsenic, lead, nickel, etc.



*Under Development

Follow-up Monitoring (Source Characterization)

Objective

- Characterize emissions & exposure near facilities
- Support CERP

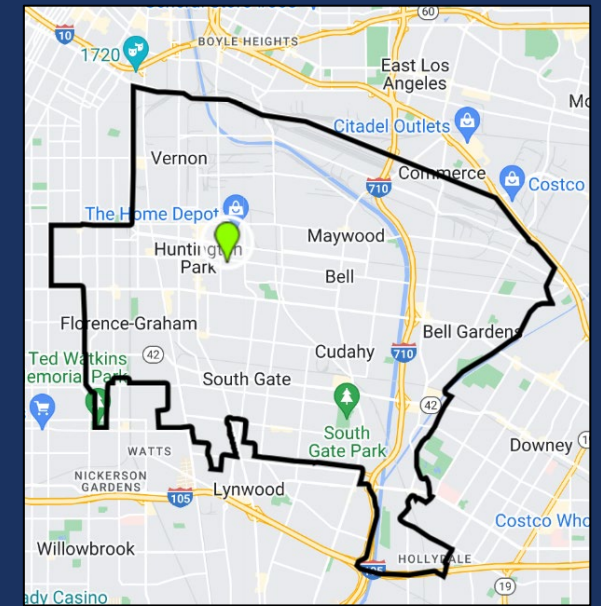
The Huntington Park monitoring station was established in **April 2022**



Continuous multi-metals monitoring began in **August 2022**

FIXED-SITE MONITORING AT HUNTINGTON PARK SITE

Gage Middle School



WHERE TO ACCESS UPDATES AND MONITORING DATA



SELA monitoring webpage provides access to real-time air quality data, CAMP documents, and future air monitoring progress reports: <http://www.aqmd.gov/ab617/monitoring/sela>

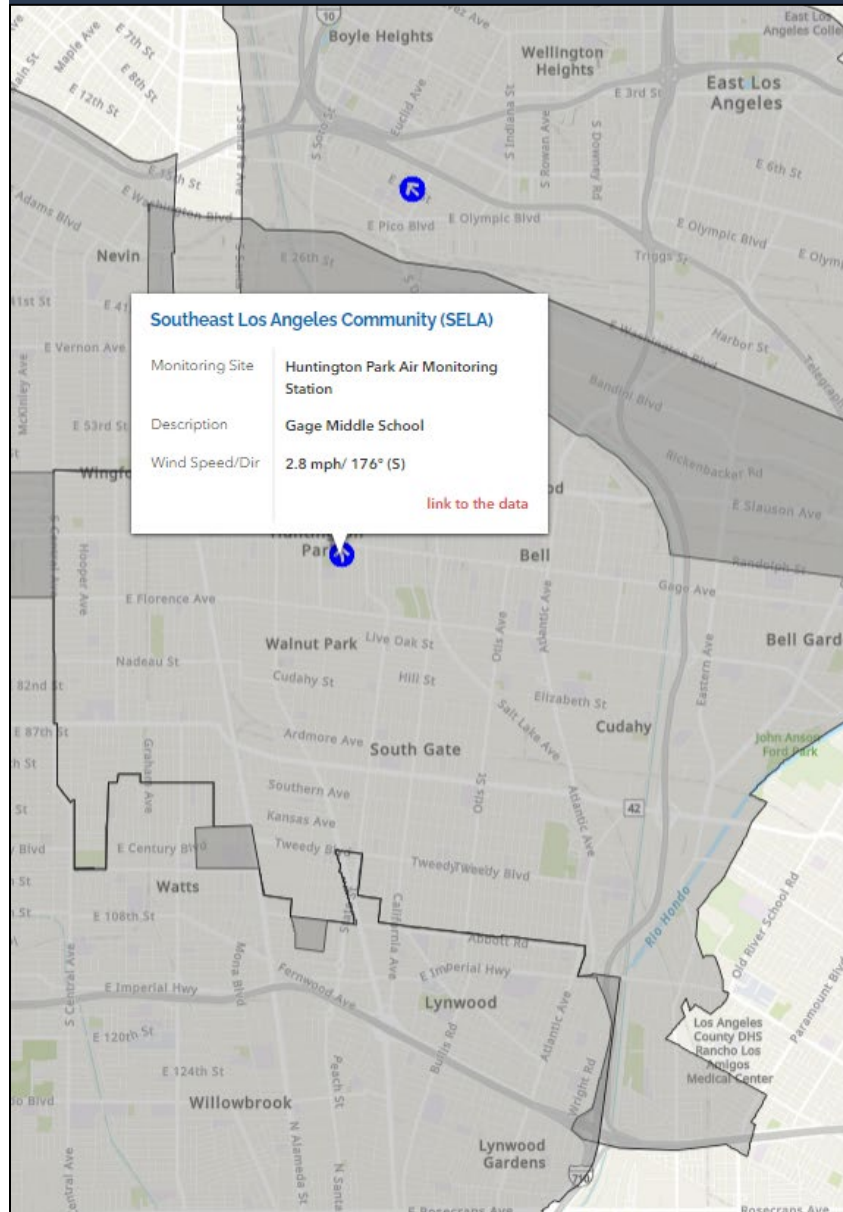
A screenshot of the 'Southeast Los Angeles Community' monitoring webpage. The page features a header with the community name, a descriptive paragraph about the data platform, and several content sections. On the left, there are links for 'Air Monitoring Data Display' (including real-time measurements and a video tutorial) and 'Interactive Data Summaries' (including a trends analysis dashboard and a video tutorial, plus a mobile monitoring dashboard). A 'Community Air Monitoring Plan (CAMP)' section explains the plan's purpose and lists links for the CAMP PDF and Quality Assurance Project Plan PDF. On the right, a 'YOU MAY ALSO LIKE ...' sidebar lists related documents: 'December 2011' CEQA comment letters, the 'Clean Communities Plan' (2010 update), the 'Boyle Heights Pilot Study Working Group' member list, and another 'Clean Communities Plan' link.

REAL-TIME CONTINUOUS MEASUREMENTS

- Provides real-time data access
- Tutorial video has been posted on webpage
- Click the link below to access the data display tool and tutorial:

<http://www.aqmd.gov/ab617/monitoring/sela>

If you have questions and/or comments, please contact:
Payam Pakbin ppakbin@aqmd.gov



Total Chromium (Cr - PM10)

0
ng/m³

Average
Previous Hour
Acute Reference Exposure Level (REL) - N/A



Copper (Cu - PM10)

2
ng/m³

Average
Previous Hour
Acute Reference Exposure Level (REL) - 100,000 ng/m³



Manganese (Mn - PM10)

2
ng/m³

Average
Previous Hour
Acute Reference Exposure Level (REL) - N/A



Nickel (Ni - PM10)

0
ng/m³

Average
Previous Hour
Acute Reference Exposure Level (REL) - 200 ng/m³



Lead (Pb - PM10)

0
ng/m³

Average
Previous Hour
Acute Reference Exposure Level (REL) - N/A



Selenium (Se - PM10)

0
ng/m³

Average
Previous Hour
Acute Reference Exposure Level (REL) - N/A



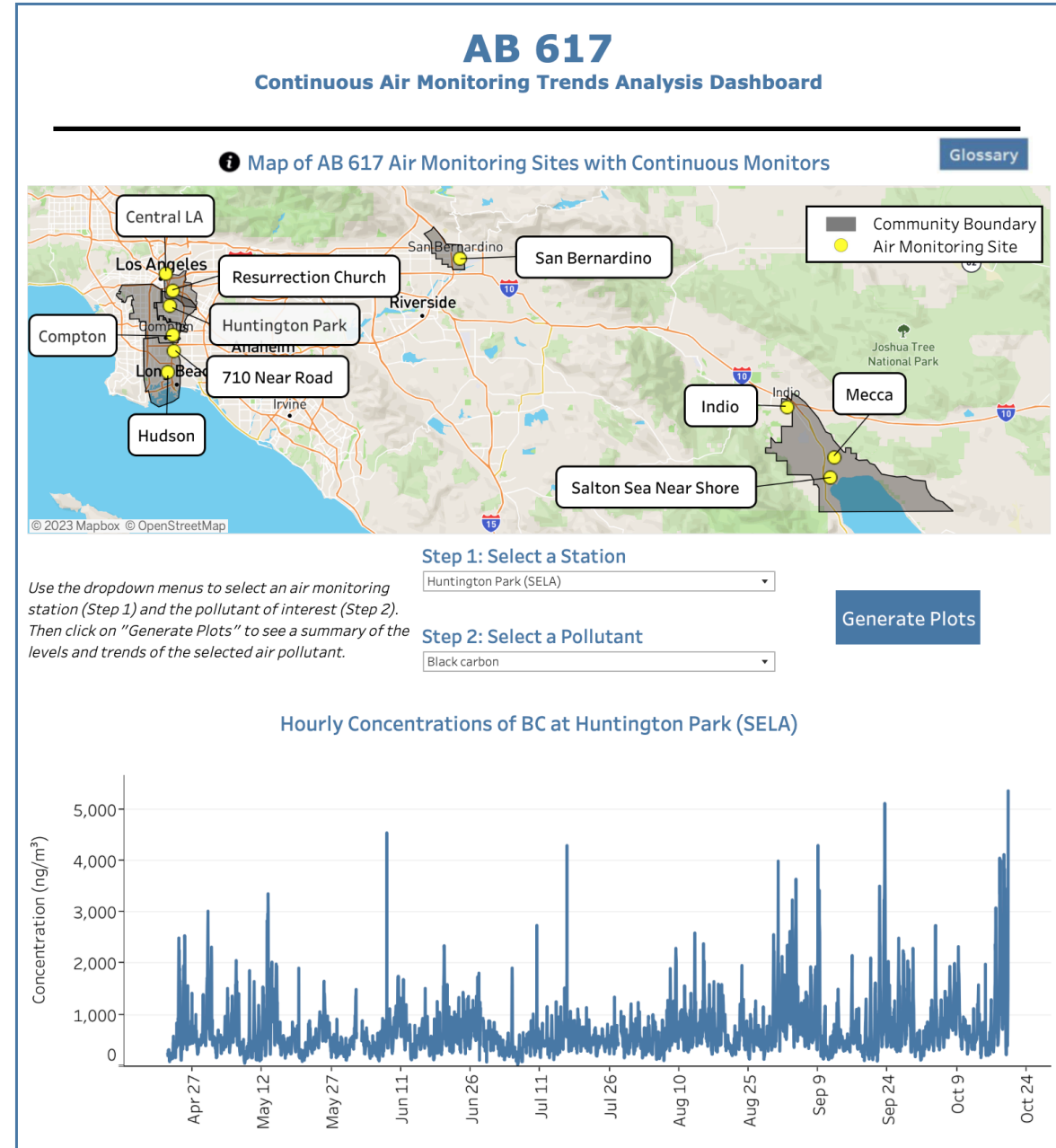
Titanium (Ti - PM10)

CONTINUOUS TRENDS ANALYSIS DASHBOARD

- Allows users to analyze and summarize trends in the continuous data
- Tutorial video has been posted on webpage
- Click the link below to access the dashboard and tutorial:

<http://www.aqmd.gov/ab617/monitoring/sela>

If you have questions and/or comments, please contact:
Payam Pakbin ppakbin@aqmd.gov



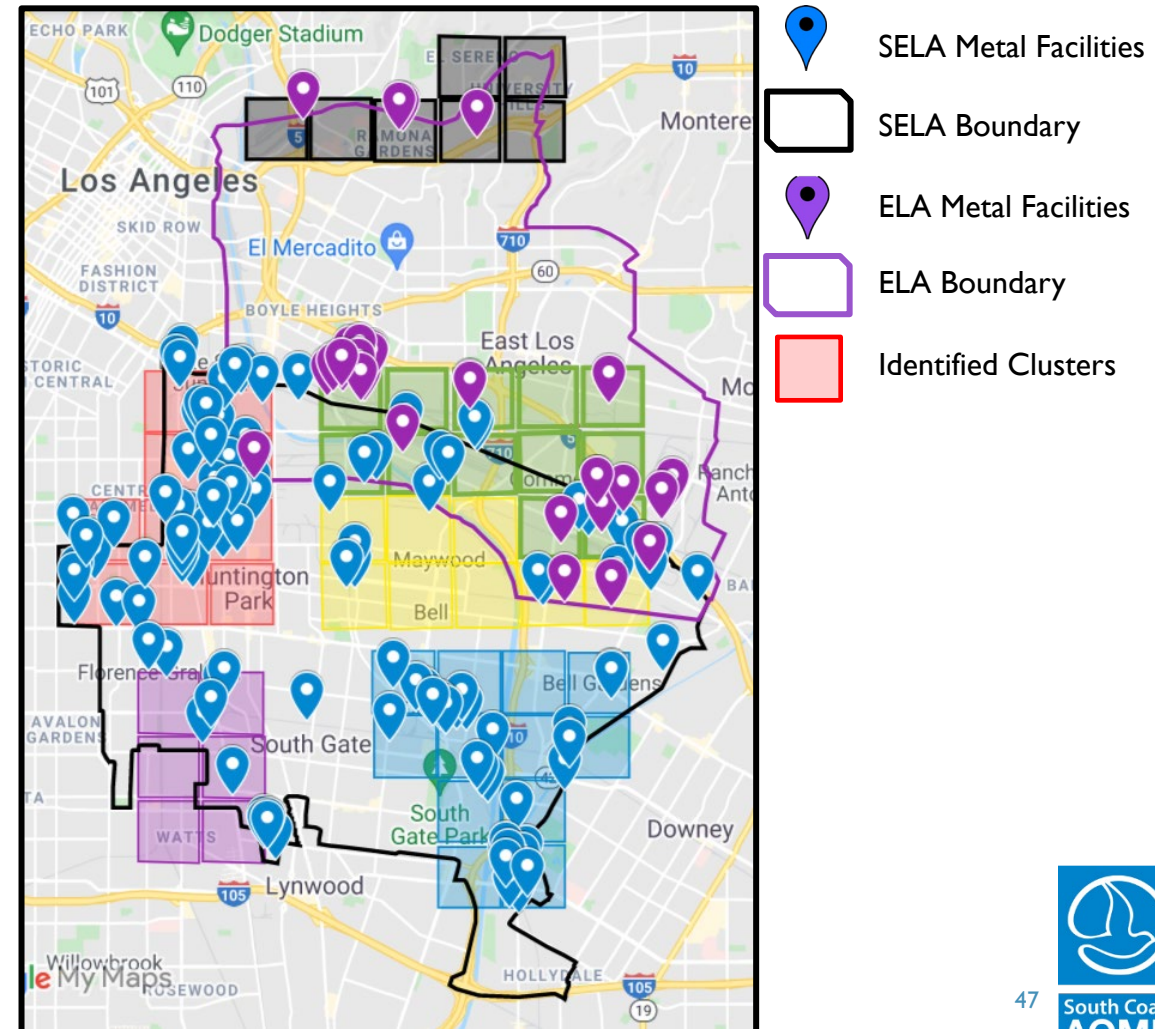
MOBILE MONITORING MEASUREMENTS OF AIR TOXIC METALS

Monitoring Approach:

- Targeted measurements within the identified clusters of metal processing facilities
- Several days of conducting mobile measurements in each cluster

Prioritization Criteria:

- Location of sources of metals emissions
 - Metal processing facilities
 - Freeways and major roadways
- Proximity of these sources to residential areas



MOBILE MONITORING MEASUREMENTS OF AIR TOXIC METALS

Summary of Efforts:

- Mobile monitoring surveys performed: **48** (since June 2022)

Next Steps:

- Analysis & interpretation of data
- Follow-up actions in areas with persistent elevated levels of metals
- Assessing how the monitoring data can be used for further actions that can potentially lead to emission reductions



DISCUSSION

- Comments, Questions, Concerns?

Mohammad Sowlat
msowlat@aqmd.gov
909-396-3144

Payam Pakbin
ppakbin@aqmd.gov
909-396-2122

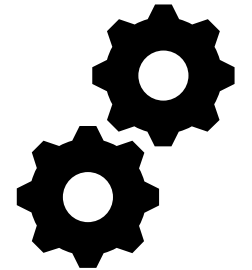




METAL PROCESSING FACILITIES

METAL PROCESSING FACILITIES – BACKGROUND

- Chapter 5e – Metal Processing Facilities, Action A*
 - **Goal:** Reduce Exposure to Metal Toxic Air Contaminants to the Extent Feasible
 - **Action:** Conduct a workshop on metal processing facilities highlighting South Coast AQMD regulatory efforts
- **Objective:** Present information about types of metal processing in the community and current and future South Coast AQMD regulatory efforts



* <https://www.aqmd.gov/docs/default-source/ab-617-ab-134/steering-committees/southeast-los-angeles/final-cerp/final-cerp.pdf?sfvrsn=9#page=116>

SOUTH COAST AQMD METAL RULES WORKSHOP

Southeast Los Angeles
Community Steering Committee Meeting
June 22, 2023

AGENDA

Background

Overview of
Regulatory Approach

Metal Toxics Rules

BACKGROUND

- Over the past 15 years, South Coast AQMD has adopted and amended a series of metal toxics rules
- Many of the rule development efforts were based on the need for stronger measures to address fugitive emissions
- Today's presentation focuses on the rules that have been developed to address metal toxic air contaminants at metal processing facilities

AQMD, TXI Riverside Cement Settle Air Quality Violations

Exide Technologies - Ambient Monitoring and Source Tests

SCAQMD Takes Steps to Reduce Toxic Emissions at Hixson Metal in Newport Beach

SCAQMD to Host Public Meeting on Air Quality Issues Related to Carlton Forge Works



South Coast Air Quality Management District

21865 Copley Drive, Diamond Bar, CA 91765-4178
(909) 396-2000 • www.aqmd.gov

NEWS

For Immediate Release
Jan. 10, 2017

Paramount Company Agrees to Order to Reduce its Hexavalent Chromium Emissions

Anaplex Corp., a metal finishing facility in Paramount, will immediately control its harmful emissions of hexavalent chromium under an order approved today by the independent South Coast Air Quality Management District Hearing Board.

Under the order, effective immediately, Anaplex must shut down all equipment with the

CONCERNS ABOUT METAL TOXIC AIR CONTAMINANTS

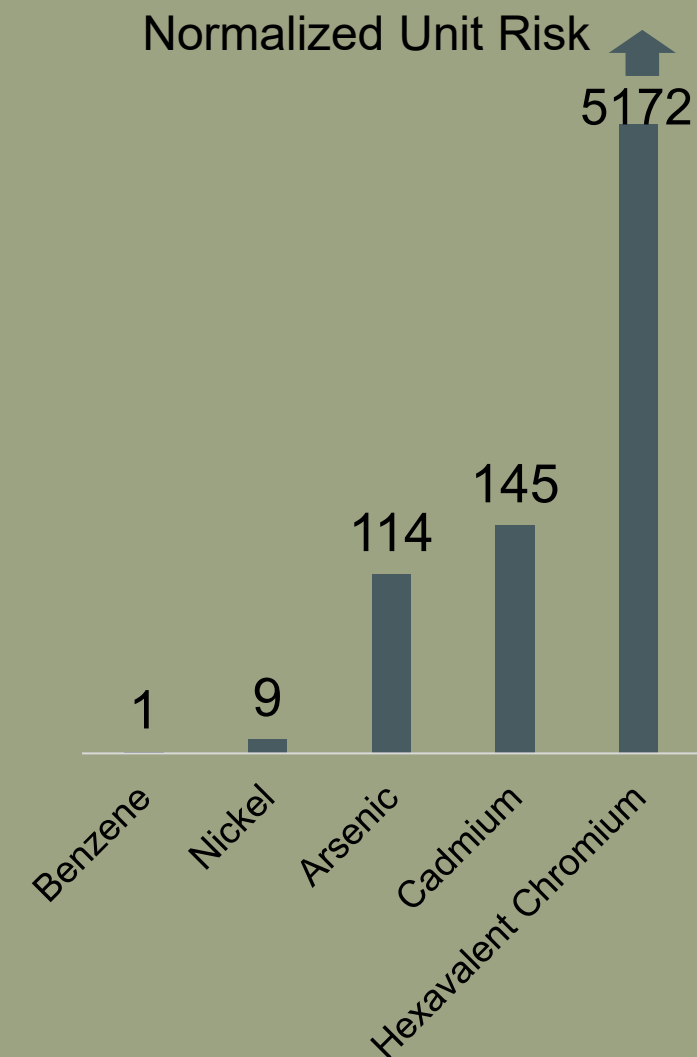
- Metal toxic air contaminants of greatest concern are:

- Nickel, Arsenic, Cadmium, Hexavalent Chromium, and Lead

- These tend to be the health risk drivers in Health Risk Assessments due to their cancer potency or other health effects

- Metal toxic air contaminants pose additional multi-pathway risks:

- Inhalation
- Ingestion
- Dermal





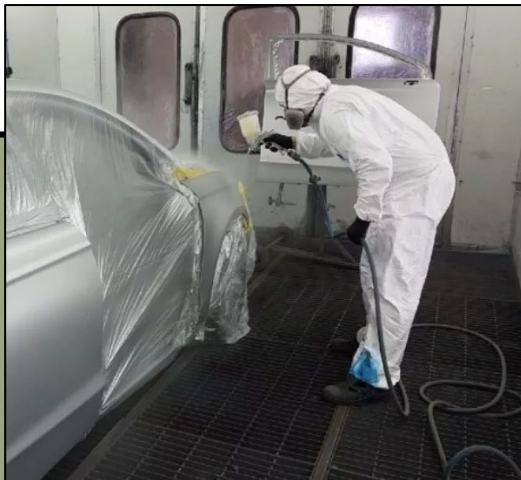
OVERVIEW OF REGULATORY APPROACH

Umbrella Rules

Covers all sources & all toxic air contaminants

Rule 1401 – New Source Review of Toxic Air Contaminants

- Limits cancer risk and chronic and acute hazard increase for new and modified equipment



Rule 1401.1 – Requirements for New and Relocated Facilities Near Schools

- Further limits health risks for new equipment permitted near schools



Rule 1402 – Control of Toxic Air Contaminants from Existing Sources

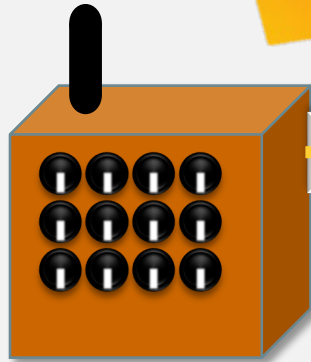
- Limits total risk from all operations at existing facilities



THREE KEY CONTROL ELEMENTS

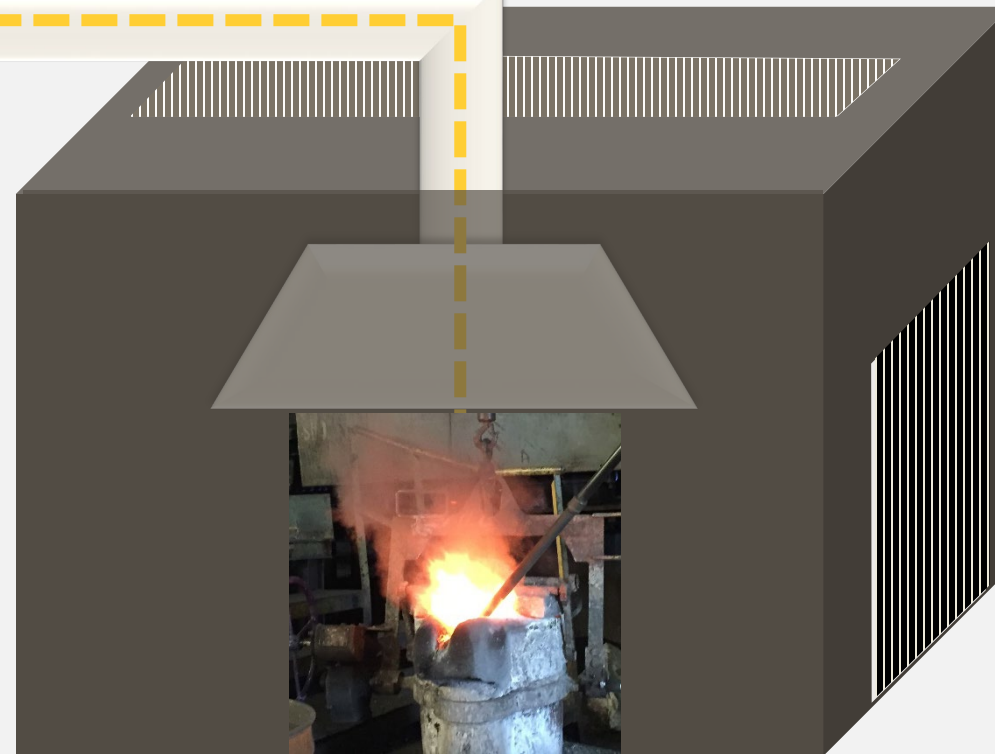
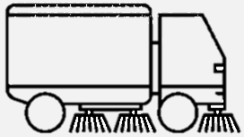
Point Source Controls

Point source emission controls to reduce metal toxics at the source



Housekeeping

Housekeeping provisions to minimize fugitive metal particulates from becoming airborne



Enclosures

Enclosure, with minimal openings for ingress and egress to contain fugitive metal particulate emissions

KEY ELEMENTS OF POINT SOURCE CONTROL REQUIREMENTS



Collection Efficiency

Ensures the pollution control device has the appropriate design and operating parameters to collect emissions



Point Source Control

Ensures that the pollution control devices will meet a specified standard which can be a technology, control efficiency, or emission limit

POINT SOURCE STANDARDS

Point source standard establishes the emission limit for the air contaminant(s) released from the stack

Ensures emissions from the source or process meet a specific standard



HOUSEKEEPING REQUIREMENTS

Storage and Transport



Covered, sealed, and leak proof containers

Transport conditions-sealed during transportation

Cleaning



Prescribed cleaning method

Frequent cleaning of high emissions areas

Monitoring



Regular inspections of control devices, vents, and openings

Throughput records

Bag leak detection systems



ENCLOSURE REQUIREMENTS

- A building or structure that minimizes cross-drafts
- Limited openings
 - Airlock systems
 - Overlapping plastic curtains
 - Automatic doors

SOURCE-SPECIFIC RULES ON METAL PROCESSING

Rule	Title	Last Amended/Adopted
1407	Control of Emissions of Arsenic, Cadmium, and Nickel from Non-Chromium Metal Melting Operations	2019
1407.1	Control of Toxic Air Contaminant Emissions from Chromium Alloy Melting Operations	2021
1420	Emissions Standard for Lead	2017
1420.1	Emission Standards for Lead and Other Toxic Air Contaminants from Large Lead-Acid Battery Recycling Facilities	2015
1420.2	Emission Standards for Lead from Metal Melting Facilities	2015
1426	Emissions from Metal Finishing Operations	2021
1430	Control of Emissions from Metal Grinding Operations at Metal Forging Facilities	2017
1460	Control of Particulate Emissions from Metal Recycling and Shredding Operations	2022
1469	Hexavalent Chromium Emissions from Chromium Electroplating and Chromic Acid Anodizing Operations	2021
1469.1	Spraying Operations Using Coatings Containing Chromium	2021

RULE 1407 – CONTROL OF EMISSIONS OF ARSENIC, CADMIUM, AND NICKEL FROM NON-CHROMIUM METAL MELTING OPERATIONS (2019)



Point Source

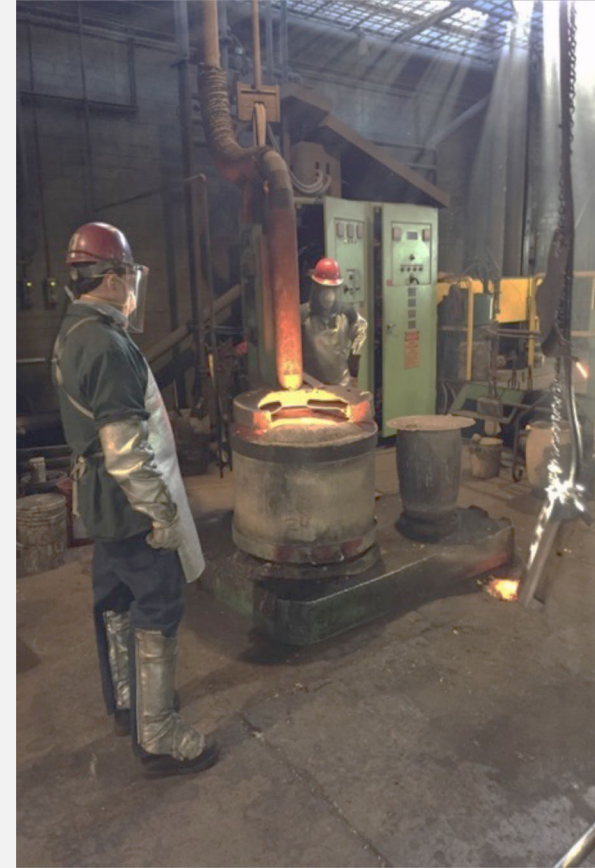


Housekeeping



Enclosure

- Regulates aluminum, iron, and steel melting furnaces
- Sets mass emission limits on arsenic, cadmium, and nickel
- Many facilities can comply by only melting metals that contain trace amounts of these toxic air contaminants



RULE 1407.1 –CONTROL OF TOXIC AIR CONTAMINANT EMISSIONS FROM CHROMIUM ALLOY MELTING OPERATIONS (2021)



Point Source



Housekeeping



Enclosure

- Regulates facilities conducting chromium alloy melting operations
- Sets restrictions on the percentage of arsenic and cadmium that can exist in alloys
- Requires source testing every 60 months and perimeter monitoring every 180 days



RULE 1420 – EMISSIONS STANDARD FOR LEAD (2017)



Point Source



Housekeeping



Enclosure

- Regulates ambient air lead concentrations from non-vehicular sources
- Sets concentration limits for lead
- Requires source test every 24 months and can require air monitoring



RULE 1420.1 – EMISSION STANDARDS FOR LEAD AND OTHER TOXIC AIR CONTAMINANTS FROM LARGE LEAD-ACID BATTERY RECYCLING FACILITIES (2015)



Point Source



Housekeeping



Enclosure

- Regulates lead-acid battery recycling facilities that process more than 50,000 tons of lead in a year
- Protects public health by reducing arsenic, benzene, and 1,3-butadiene exposure and emissions
- Source test required every 24 months
- Requires perimeter monitoring



RULE 1420.2 – EMISSION STANDARDS FOR LEAD FROM METAL MELTING FACILITIES (2015)



Point Source



Housekeeping



Enclosure

- Regulates lead melting facilities that process more 100 tons per year
- Limits ambient air lead concentrations around facilities
- Source test required every 24 months
- Requires facilities to follow an approved Lead Ambient Air Monitoring and Sampling Plan if ambient limits exceeded



RULE 1426 – EMISSIONS FROM METAL FINISHING OPERATIONS (2021)



Housekeeping



Enclosure

- Reduces fugitive emissions of hexavalent chromium, nickel, cadmium, and lead at metal finishing facilities
- Best management practices requirements
- Point source controls would be addressed in future rules



RULE 1469 – HEXAVALENT CHROMIUM EMISSIONS
FROM CHROMIUM ELECTROPLATING AND
CHROMIC ACID ANODIZING OPERATIONS (2021)



Point Source



Housekeeping



Enclosure

- Reduces hexavalent chromium emissions from facilities that perform chromium electroplating or chromic acid anodizing operations
- Hexavalent chromium emissions from tanks are vented to an air pollution control device
- Requires source testing of emission control devices every 5 or 7 years (more frequent parameter monitoring)



RULE 1430 – CONTROL OF EMISSIONS FROM
METAL GRINDING OPERATIONS AT METAL
FORGING FACILITIES (2017)



Point Source

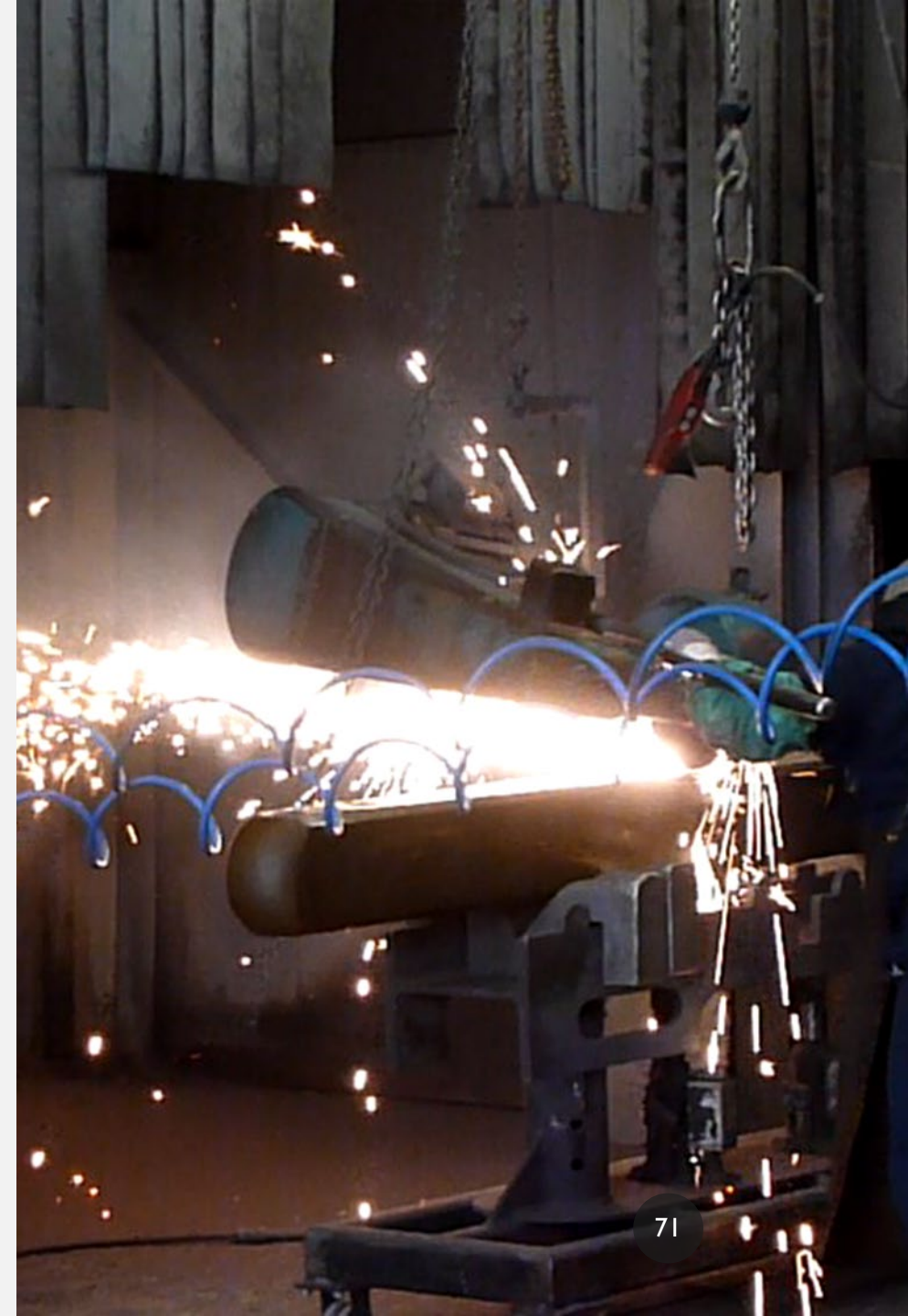


Housekeeping



Enclosure

- Reduces toxic emissions, particulate matter emissions, and odors from metal grinding and metal cutting operations at metal forging facilities
- Grinding and cutting must be vented to high efficiency particulate air (HEPA) filtration device
- Requires source testing of emission control devices every 12 months



RULE 1460 – CONTROL OF PARTICULATE EMISSIONS FROM METAL RECYCLING AND SHREDDING OPERATIONS (2022)



Point Source



Housekeeping



Enclosure

- Minimizes fugitive dust from metal recycling facilities and metal shredding facilities
- New rule adopted based on SELA & SLA CERP Actions
- By July 1, 2023, facilities required to:
 - Register with South Coast AQMD
 - Install facility contact signage



RULE 1469.1 – SPRAYING OPERATIONS USING COATINGS CONTAINING CHROMIUM (2021)



Point Source



Housekeeping



Enclosure

- Reduces hexavalent chromium emissions from facilities that spray chromate coatings
- Chromate spraying must be conducted in a spray booth that is vented to HEPA filters
- Parameter monitoring required to demonstrate that the collection and control system for toxic metal particulate is working properly



FUTURE RULE MAKING ACTIVITIES



Proposed Rule 1435 – Control of Toxic Air Contaminant Emissions from Metal Heating Operations



Proposed Rule 1445 – Control of Toxic Emissions from Laser and Plasma Arc Cutting



Proposed Rule 1455 – Control of Toxic Emissions from Torch Cutting and Welding

STAYING UPDATED

Sign up to receive e-mail updates via

<http://www.aqmd.gov/sign-up>

Sign Up

The South Coast AQMD offers periodic newsletter updates via Email on a variety of topics . Click on the Manage Subscriptions link at the bottom of the form to update your subscriptions (unsubscribe from lists, subscribe to additional lists, or change your Email address).

If you wish to receive daily pollution forecasts or alerts for specific pollution levels in your area, sign up for [Air Alerts](#).

For printed copies of South Coast AQMD publications that mailed to you, please visit [Subscription Services](#) (charges may apply).

Enter the following information:


Email Address:	Re-Enter Email Address:
<input type="text"/>	<input type="text"/>
First Name (optional):	Last Name (optional):
<input type="text"/>	<input type="text"/>

Subscribe by checking the box adjacent to the E-Mail List(s) you are interested in and then CLICK on the Subscribe button below:

General Notifications:

<input type="checkbox"/> Events & Conferences	List of stakeholders interested in events and conferences.
<input type="checkbox"/> South Coast AQMD News	Brief updates highlighting what is current at South Coast AQMD, such as conferences, equipment exchanges, advisories, etc.
<input type="checkbox"/> South Coast AQMD Advisor	South Coast AQMD's comprehensive bi-monthly newsletter containing the latest news, including rule updates, the latest on programs for businesses

Subscribe by scrolling down the page and checking off the box for rules of interest to receive future meeting notices and links to documents



<input type="checkbox"/> Rule 1426.1	Point Source Emissions from Hexavalent Chromium Metal Finishing Operations
<input type="checkbox"/> Rule 1435	Control of Emissions from Metal Heat Treating Processes
<input checked="" type="checkbox"/> Rule 1445	Control of Toxic Emissions from Laser and Plasma Arc Cutting
<input type="checkbox"/> Rule 1455	Control of Toxic Emissions from Torch Cutting and Welding
<input type="checkbox"/> Rule 1460	Control of Particulate Emissions from Metal Recycling and Shredding Operations
	Toxic Air Contaminant Emissions from Decontamination of Soil



QUESTIONS?



COMMENTS?

CONTACTS

Neil Fujiwara

nfujiwara@aqmd.gov

909.396.3512

Michael Laybourn

mlaybourn@aqmd.gov

909.396.3066

Isabelle Shine

ishine@aqmd.gov

909.396.3064

Hay Lo

hlo1@aqmd.gov

909.396.2450

Madison Landi

mlandi@aqmd.gov

909.396.3538

Joshua Ewell

jewell@aqmd.gov

909.396.2212

Kalam Cheung

kcheung@aqmd.gov

909.396.3281

Michael Morris

mmorris@aqmd.gov

909.396.3282



JOIN THE CLEAN AIR TEAM!

¡ÚNETE AL EQUIPO DE AIRE LIMPIO!



APPLY ONLINE APLICA EN LINEA

www.aqmd.gov/careers



4 Day Work Week
Semana de trabajo de 4 días



Retirement Plan
Plan de retiro



Telework up to 3 Days/Week
Teletrabajo hasta 3 días/semana



Life Insurance Benefits
Beneficios del seguro de vida



Medical, Dental and Vision Insurance
Seguro médico, dental y de la vista



Wellness Programs
Programas de bienestar



13 Paid Holidays
13 días festivos pagados



Continued Education Reimbursement
Reembolso de educación continua