

# AB 617 - SOUTH LOS ANGELES (SLA) COMMUNITY STEERING COMMITTEE MEETING



VIRTUAL MEETING

OCTOBER 7, 2021

1

## Language Justice Announcement

### During the Event

#### SLOW DOWN

Facilitators, presenters, trainers, participants... anyone speaking during the event, **speak at a moderate pace**. Take a breath after each sentence, take a pause after switching speakers and asking questions. Slowing down supports **EVERYONE**, not just interpreters.



#### SPEAK-UP

Speak loud and clear! Ideally, using **headphones with a mic**. Interpreters need to be able to hear the speaker over the sound of their own voice when doing simultaneous interpretation.

#### SAY YOUR NAME EACH TIME YOU SPEAK

Folks listening to the interpretation might only hear the interpreters voice, so they will not notice when a new person is speaking.



#### ONE PERSON AT A TIME

Interpreters can only interpret for **one person at a time**, and they don't want to be put in the position of having to decide which voice to privilege over another.

#### LANGUAGE IS NOT A BARRIER

To the contrary, when we have multiple languages in a space, we have **multiple cosmovisions**, and **multiple ways** of understanding the world. We have the opportunity to expand and deepen our perspective, our imaginations, the possible strategies, tactics, and visions for what is possible.



Created by: catalina.nieto.interpretation@gmail.com With the advice, expertise and support of many people in the Language Justice Community

2

## CERP AND CAMP TIMELINE



3

## SUBCOMMITTEE MEETINGS RECAP

CSC MEETING SUMMARIES MAY BE FOUND [HERE](#)

4

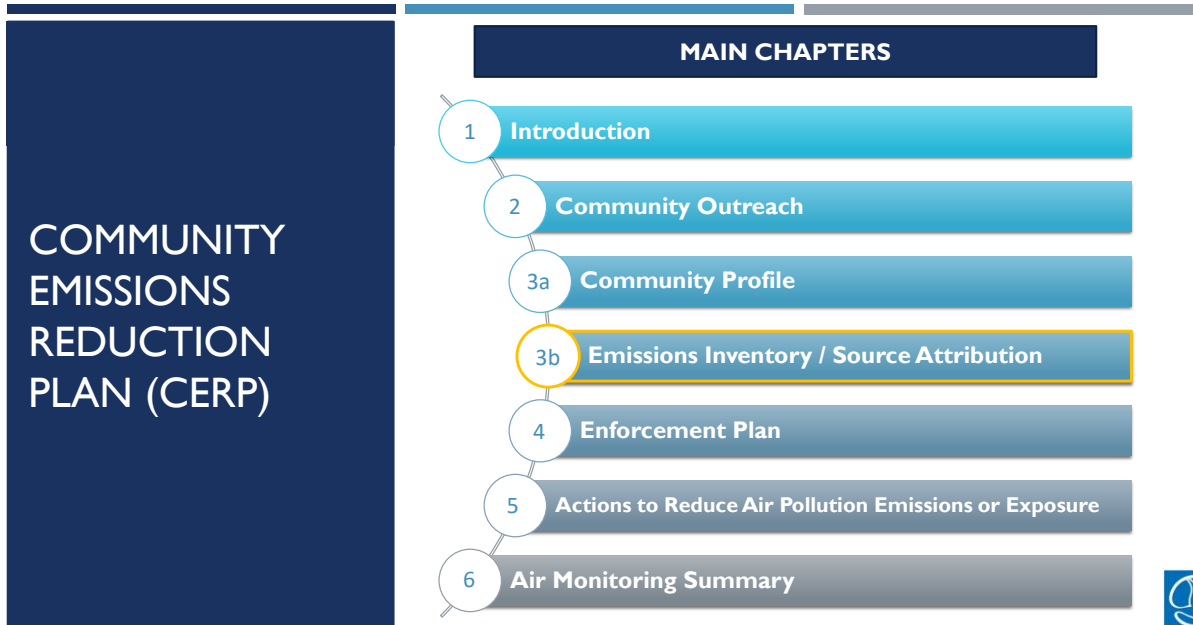
4

# Air Pollutants Emissions Inventory

Assembly Bill (AB) 617  
Community Air Initiatives



5



6

## Source Attribution

---

### What is source attribution?

- The emissions inventory for an area
- Evaluates sources, their emissions and their contribution to cumulative exposure burden

### Why are we doing this?

- Provide information to the community for informed decision making
- Meet AB 617 statutory requirement\*

\*Health and Safety Code §44391.2 (b)(2)



South Coast  
Air Quality Management District

7

7

## Acronyms & Abbreviations

---

- |                                  |   |
|----------------------------------|---|
| • CAP – Criteria Air Pollutant   | • SCAG – Southern California Association of Governments |
| • CO – Carbon Monoxide           | • SOx – Sulfur Oxides                                   |
| • NOx – Oxides of Nitrogen       | • TAC – Toxic Air Contaminant                           |
| • NH3 – Ammonia                  | • TOG – Total Organic Gases                             |
| • PM2.5 – Particulate Matter 2.5 | • TSP – Total Suspended Particles                       |
| • Pb – Lead                      | • VOC – Volatile Organic Compounds                      |
| • ROG – Reactive Organic Gases   |   |

Acronyms and Abbreviations Sheet:

<http://www.aqmd.gov/docs/default-source/ab-617-ab-134/steering-committees/south-la/acronyms.pdf?sfvrsn=8>



South Coast  
Air Quality Management District

8

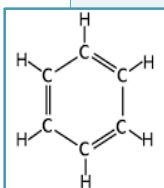
8

# Air Pollutants Included in the Emissions Inventory



## Criteria Air Pollutants (CAP)

- VOC, NO<sub>x</sub>, SO<sub>x</sub>, NH<sub>3</sub>, PM<sub>2.5</sub> and Pb



## Toxic Air Contaminants (TAC)

- 24 reported

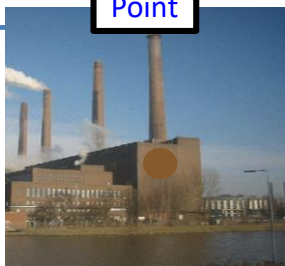


South Coast  
Air Quality Management District

9

## Emission Source Categories

### Point



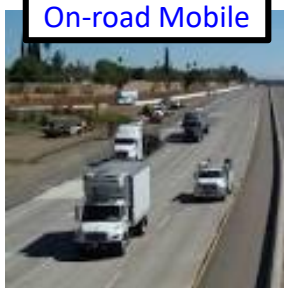
- Emissions from [Annual Emissions Reporting](#) (AER) Program
- Toxic Air Contaminants emissions reported under [AB 2588](#)

### Area



- Emissions developed jointly by South Coast AQMD and CARB
- Toxic emissions calculated based on CARB evaluation

### On-road Mobile



- Emissions developed using SCAG's travel demand activity and CARB's data

### Off-road Mobile



- Emissions are calculated based on category-specific methods

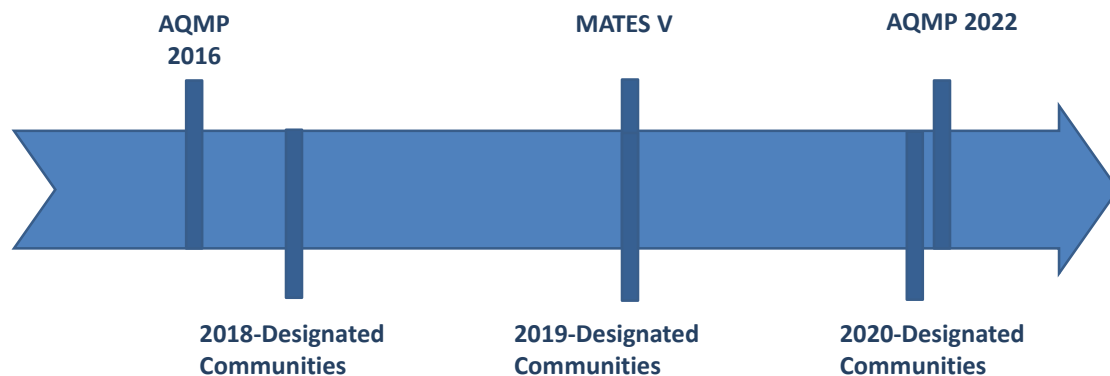


South Coast  
Air Quality Management District

10

10

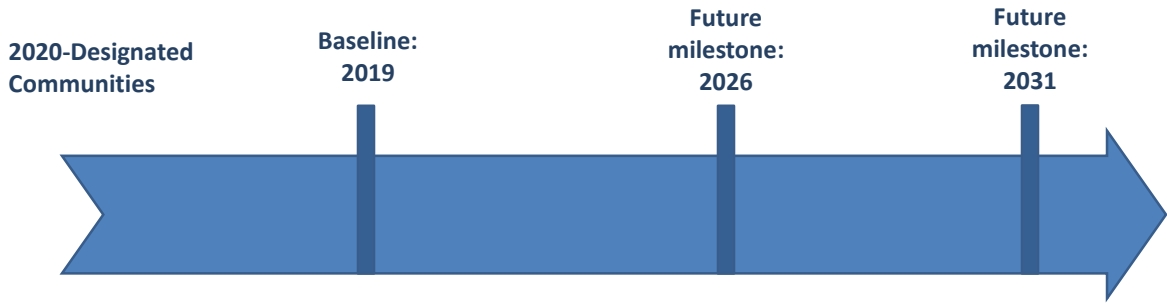
## Data Sources for Emission Inventories



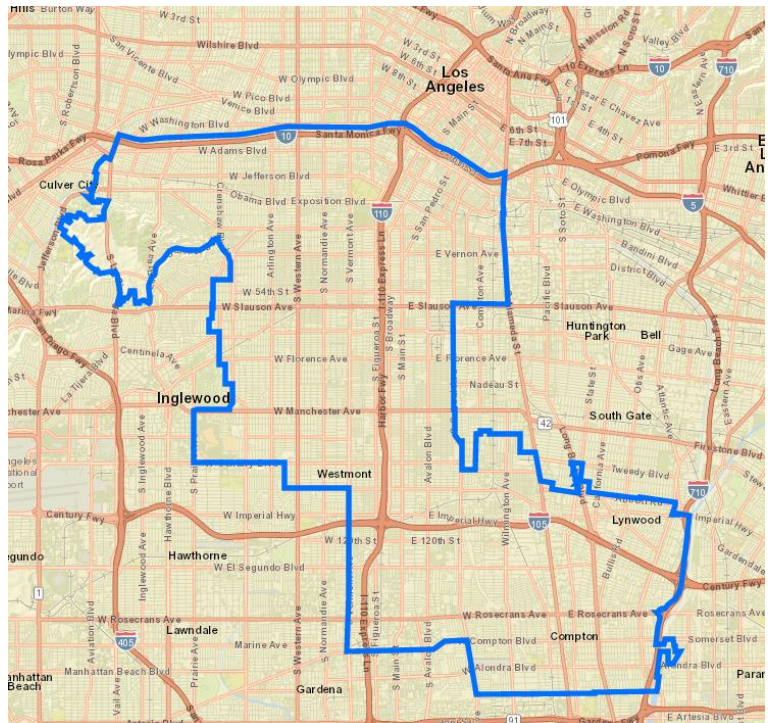
## Selected List of Air Toxic Contaminants and Their Associated Cancer Risk Factor

	Cancer unit risk 1/(ug/m <sup>3</sup> )	Relative factor To DPM
Benzene	6.77E-05	0.09
Ethylene oxide	8.80E-05	0.12
Formaldehyde	1.42E-05	0.02
Perchloroethylene	1.42E-05	0.02
1,3-Butadiene	4.06E-04	0.55
PAHs(Polycyclic aromatic hydrocarbon)	2.64E-03	3.55
Asbestos	1.90E-04	0.26
Cadmium	1.01E-02	13.58
Hexavalent chromium	3.45E-01	463.71
Nickel	6.16E-04	0.83
Arsenic	8.12E-03	10.91
Lead	2.84E-05	0.04
Diesel Particulate Matter (DPM)	7.44E-04	1.00

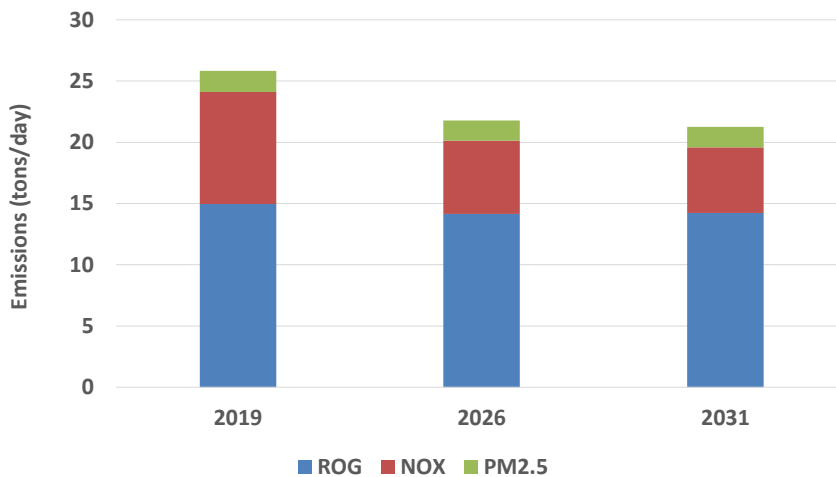
# Emissions Inventory Milestone Years



## South Los Angeles Community Boundary



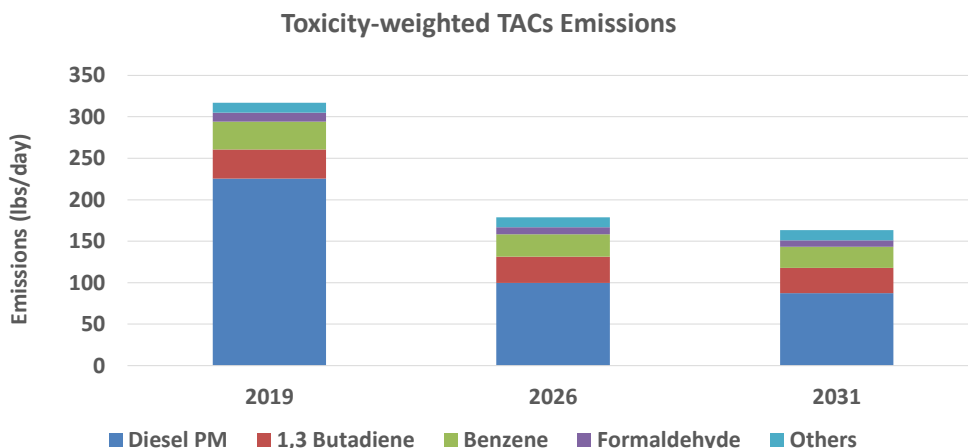
## Criteria Air Pollutants emissions decreasing in South Los Angeles Community



15

15

## Toxic Air Contaminants decreasing in South Los Angeles

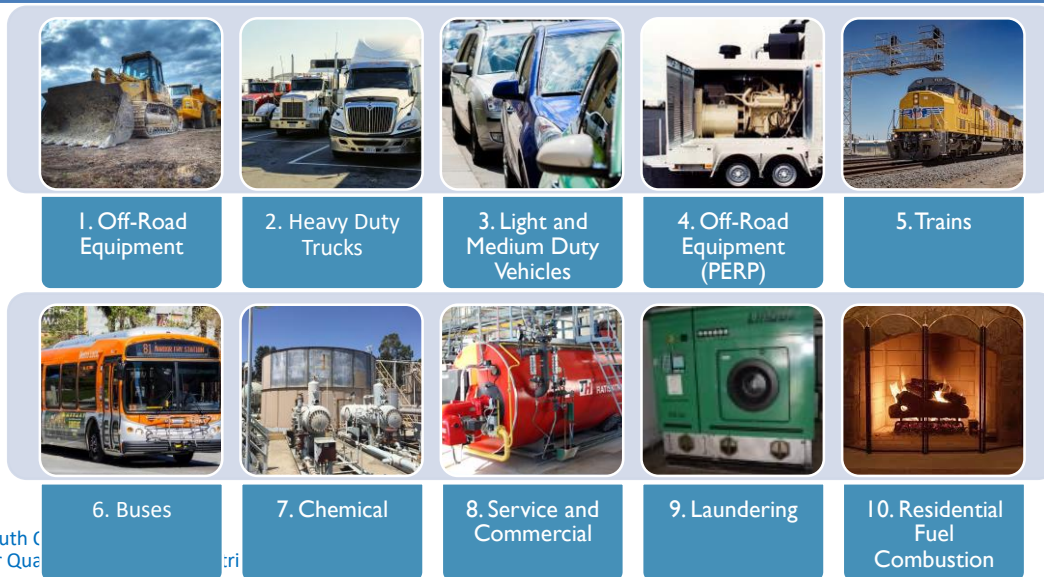


16

16

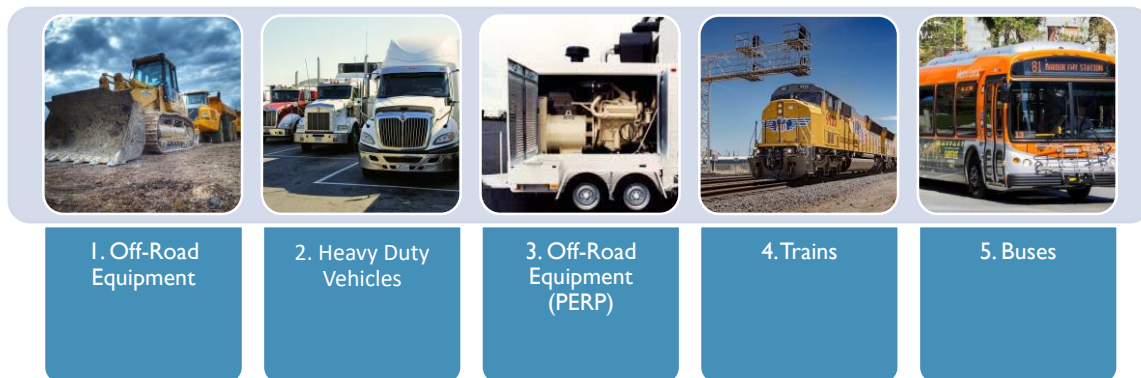


## Top 10 Sources of TACs in the South Los Angeles



South Coast Air Quality Management District

## Top 5 Diesel PM Sources in South Los Angeles



South Coast Air Quality Management District

## Categories included in Off-Road Equipment in SLA



Construction  
and Mining  
Equipment

Transport  
Refrigeration  
Units

Lawn and  
Garden  
Equipment

Industrial  
Equipment

Commercial  
Equipment

Off-Road  
Equipment  
(PERP)



South Coast  
Air Quality Management District

19

19

## Summary

- The prevalent TACs in the community are Diesel PM, 1,3 butadiene and benzene
- Off-road equipment, heavy duty trucks and PERP equipment are the largest source of DPM emissions
- Emissions of major TACs are expected to decrease in future years
- Diesel PM decreases substantially in future years, but it remains the largest contributor to total toxic emissions in the future
  - Off-road equipment is projected to remain the largest emitter of TACs in 2026 and beyond



South Coast  
Air Quality Management District

20

20

# Questions

---



[blog.cleaneenergy.org](http://blog.cleaneenergy.org)

## OFFICE OF COMPLIANCE & ENFORCEMENT



## GENERAL INDUSTRIAL

# GENERAL INDUSTRIAL



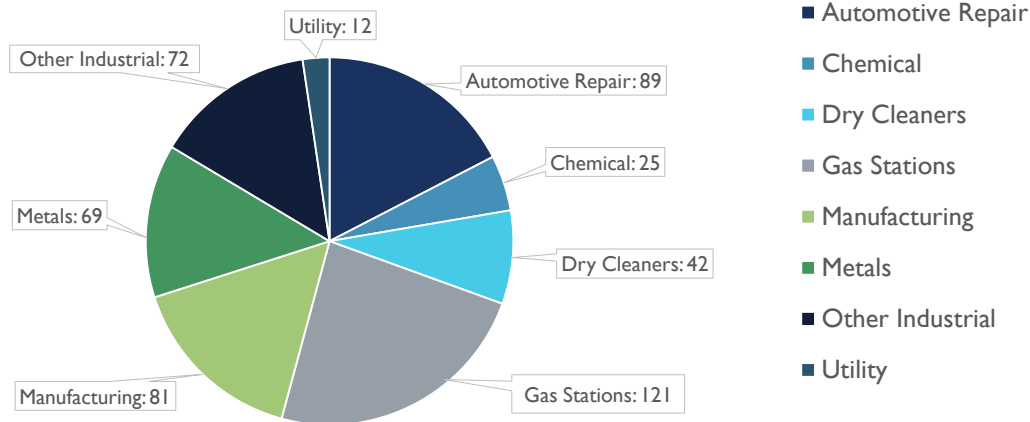

23

23

# IN YOUR COMMUNITY



General Industrial South LA Facilities with Active Permits



24

24

## CHEMICAL OPERATIONS



Operations to store, process, transfer, or produce chemicals:

- Paints and Solvents
- Petroleum Products
- Plastics

Examples of Equipment:

- Storage Tanks
- Heaters/Burners
- Blending Tanks



25

25

## DRY CLEANERS



- Dry cleaners are permitted to use hydrocarbon-based solvents in their machines
- Must follow usage limits

Examples of Equipment:

- Boilers
- Dry Cleaning Machine



26

26

## GAS STATIONS



- Gas stations are permitted for their fuel storage and dispensing equipment

### Examples of Equipment:

- Storage Tanks
- Hoses
- Nozzles
- In-Station Diagnostics



27

27

## MANUFACTURING OPERATIONS



Operations to produce a specific type of product:

- Consumer Products
- Food and Beverages
- Paper Products
- Textiles Products
- Wood Products

Examples of Equipment

- Storage/Blending Tanks
- Paint Spray Booths
- Heaters/Ovens



28

28

## UTILITY OPERATIONS



Operations supporting public utilities:

- Power Plants
- Water Departments
- Waste Management
- Wastewater Treatment



Examples of Equipment:

- Diesel Emergency Generators
- Fuel Dispensing
- Power Plant Turbine



29

29

## OTHER INDUSTRIAL



Other types of operations:

- Construction
- Construction Support Services
- City Support Services

Examples of Equipment:

- Soil Vapor Extraction units
- Fuel Dispensing
- Portable Equipment (PERP)



30

30

## FACILITY INSPECTIONS



- Process walkthrough
- Review of permitted/unpermitted equipment
- Production review
- Document review
- Sampling
- General observations
- Enforcement action as necessary



31

31

## PUBLIC COMPLAINTS



- **I-800-CUT-SMOG (1-800-288-7664) or online [www.aqmd.gov](http://www.aqmd.gov)**
- Live attendant during business hours (Monday-Friday) or to our standby system off-hours
- Types of complaints: odors, dust, smoke, and other types
- Complainant information = confidential
- Complaints can be made anonymously
- **INSPECTORS FOLLOW-UP ON ALL COMPLAINTS**



32

32



## COMPLAINT INVESTIGATIONS



- Discussion with the complainant to obtain additional information
- Surveillance of the alleged source
- If source is unknown, investigate any potential sources
- If a source is confirmed, conduct an on-site inspection
- Enforcement action as necessary (Notice to Comply and/or Notice of Violation)
- Follow-up with complainant on results of investigation

33

33

## OPEN DISCUSSION

Comments, Questions, Concerns?



34

34

---

## GETTING TO THE ACTIONS: WHERE DO WE GO FROM HERE?

35

35

---

## PUBLIC COMMENT

36

36

## CERP AND CAMP TIMELINE



37

37

## SOUTH COAST AQMD CONTACTS: SLA



- CERP**  
 Nicole Silva  
 Program Supervisor  
[nsilva@aqmd.gov](mailto:nsilva@aqmd.gov)  
 909-396-3384
- CAMP**  
 Payam Pakbin  
 Program Supervisor  
[ppakbin@aqmd.gov](mailto:ppakbin@aqmd.gov)  
 909-396-2122
- CSC**  
 Evangelina Barrera  
 Sr. Public Affairs Specialist  
[ebarrera@aqmd.gov](mailto:ebarrera@aqmd.gov)  
 909-396-2583
- CAMP**  
 Angela Haar  
 Principal AQ Chemist  
[ahaar@aqmd.gov](mailto:ahaar@aqmd.gov)  
 909-396-2518



38

38