

Criteria for Air Filtration Systems Worksheet

(Chapter 5g, Action 2: Reduce Exposure to Harmful Air Pollutants at Schools, Childcare Centers, and Community Centers)

What is the air quality concern?

The San Bernardino, Muscoy (SBM) Community Steering Community (CSC) expressed concern about air quality impacts at schools, childcare and community centers located near sources of air pollution. For example, schools located near truck routes, railyards, and concrete batch plants may be exposed to higher levels of air pollution.



What are we doing about it?

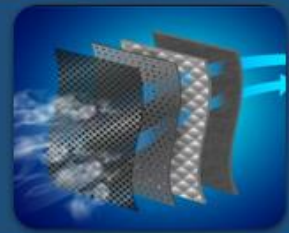
Existing local and statewide efforts (e.g., regulations, enforcement activities, and incentives) aim to reduce emissions from sources of air pollution. Additionally, the SBM Community Emissions Reduction Plan (CERP) specifies actions to reduce exposure to air pollution, such as, fugitive dust and diesel particulate matter (DPM). These actions include:

- Prioritizing schools, childcare and community centers near truck routes, railyards, and concrete batch plants, and
- Working with appropriate entities (e.g., school districts) to install or replace high efficiency air filtration systems at selected sites.

Frequently Asked Questions:

What is a High-Efficiency Air Filter?

- Filters DPM, fugitive dust and other particles (e.g., pollen)
- Reduces exposure to DPM at schools located near freeways, truck routes, railyards, and other industrial sources



Who installs the Air Filtration Systems?

- The South Coast AQMD will partner with school districts and contractors to install filters

When will Air Filtration Systems be installed?

- Beginning mid-2020, during CERP implementation, based on funding availability and criteria



Why is this worksheet important?

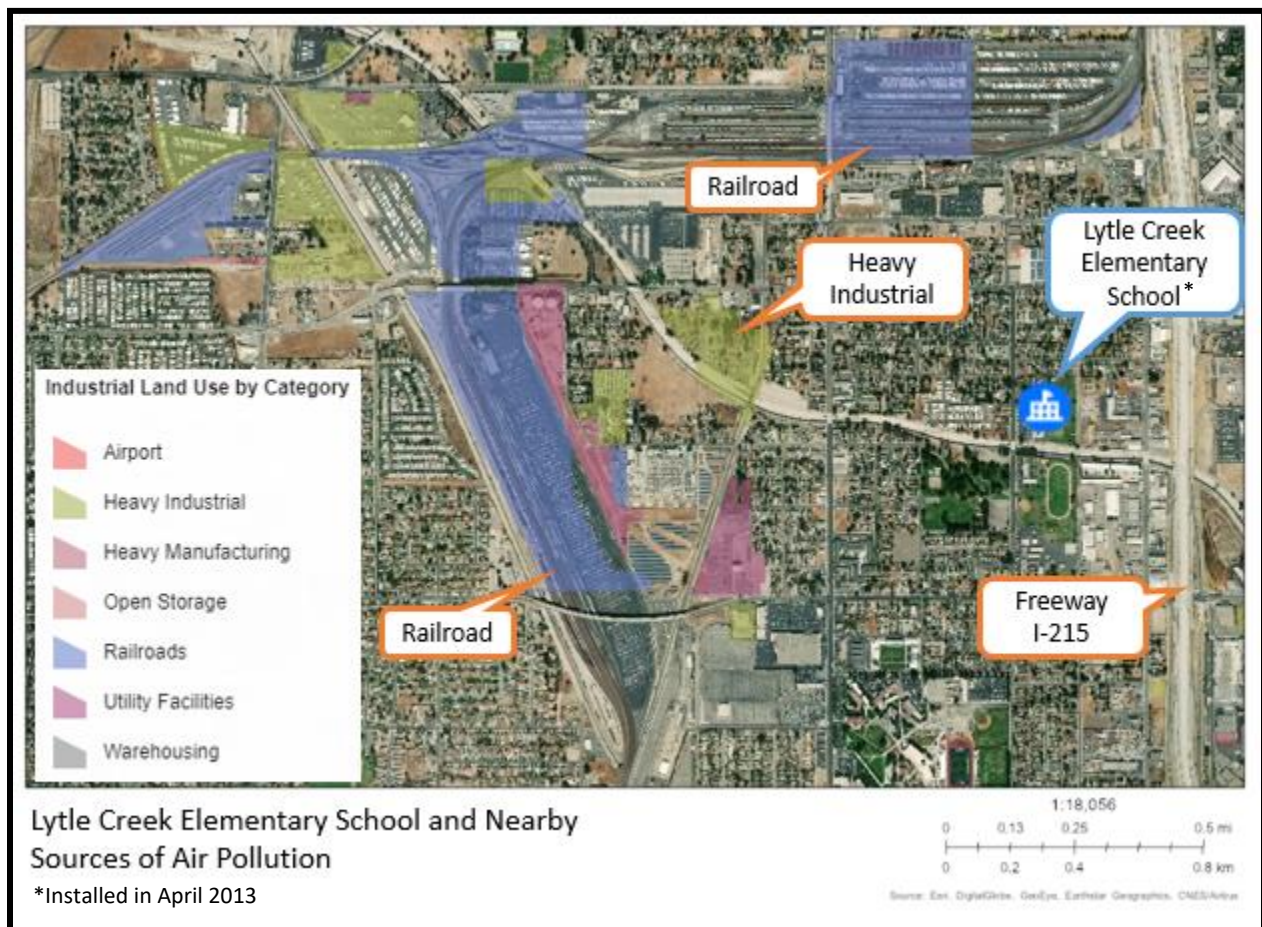
Members of the public can use this worksheet to provide input to South Coast AQMD on the appropriate criteria to prioritize the installation of air filtration systems at schools, childcare and community centers in the SBM Community.

What are examples of criteria for prioritization?

The section below provides examples of criteria that have been used to prioritize the installation of air filtration systems at schools in the South Coast Air Basin.

1. South Coast AQMD's air toxics and cancer risk information [Multiple Air Toxics Exposure Study III (MATES III)]
2. Distance to stationary sources of pollution and emission levels
3. Distance to freeways and traffic volume

Example of a previous air filtration project in the SBM community (2013):



Name _____

San Bernardino, Muscoy

Phone Number _____

Email _____

CSC – Criteria for Air Filtration Systems Worksheet

Ranking for additional criteria

Below are suggested additional criteria (including a brief description of each criteria) that can be used for prioritization.

Please review the listed criteria. If there are any additional factors or criteria you think should be considered, please provide a brief description on the back of this page.

Rank the criteria in order of importance (with 1 being the most important).

Criteria and Brief Description	Rank # (1 – 5)*
Multiple Air Toxics Exposure Study IV (MATES IV) Focuses on the cancer risk from exposure to air toxics across the South Coast Air Basin.	
CalEnviroScreen 3.0 Identifies California communities by census tract that are disproportionately burdened by, and vulnerable to, multiple sources of pollution.	
CalTrans Traffic Data Traffic data can show where congestion occurs. Congestion can result in idling vehicles and create an increase emissions around nearby schools.	
School Characteristics <i>(Please check the box next to the school characteristic you think should be included)</i> <input type="checkbox"/> Highest priority for preschools, followed by elementary, middle, then high schools <input type="checkbox"/> Higher priority for schools that have more students <input type="checkbox"/> Higher priority for schools with higher percent of students enrolled in free or reduced-price meal program	
Nearby Sources of Air Pollution <i>Please list which three sources of air pollution that are of most concern when they are near schools. For example, air pollution sources can be warehouses, railyards, industrial facilities, and freeways.</i> 1) _____ 2) _____ 3) _____	

*There should be no duplicate values in your ranking.

Other Additional Criteria:

Please provide your completed school prioritization activity worksheet to Robert Dalbeck (RDalbeck@aqmd.gov) or Daniel Wong (DWong@aqmd.gov) by February 6, 2020.