

Initial Concepts for Public Reporting:
East Los Angeles/Boyle Heights/West Commerce
AB 617 Community

Data source: Aclima, July 1 to Sept 30, 2021

Presented November 18, 2021

1

Further, faster. Together. | Aclima Environmental Intelligence

AGENDA FOR TODAY


Following completion of 3-months of mobile air monitoring in East Los Angeles/Boyle Heights/West Commerce on September 30, 2021, the Aclima data science and atmospheric science teams commenced analysis. Today we'll review...

...Initial Concepts* for Public Reporting:

- Where and What We Measured
- Comparative Air Pollutant Overview
- Community Resilience Index
- Transportation Impacts Analysis
- Stationary Facilities/Fixed Sources
- Sensitive Receptors
- Address Look-up
- Early stage VOC Analysis



1.2

 *Data undergoing final QA/QC; results are not expected to shift.

2

Mobile Air Monitoring in the ELABHWC AB 617 Area

Acima measured air pollutants and GHGs block by block multiple times, day/night, weekdays/weekends, from July 1 to Sept 30, 2021.

Data in this report is currently undergoing final QA/QC; Results are not expected to shift.

Featured in this report

- Fine particulate matter (PM_{2.5})
- Black carbon (BC)
- Nitrogen Dioxide (NO₂)
- Ozone (O₃)
- Carbon monoxide (CO)
- Volatile Organic Compounds (VOCs)

Will be included in final report

- Carbon dioxide (CO₂)
- Nitric oxide (NO)
- Methane (CH₄)
- Ethane (C₂H₆)

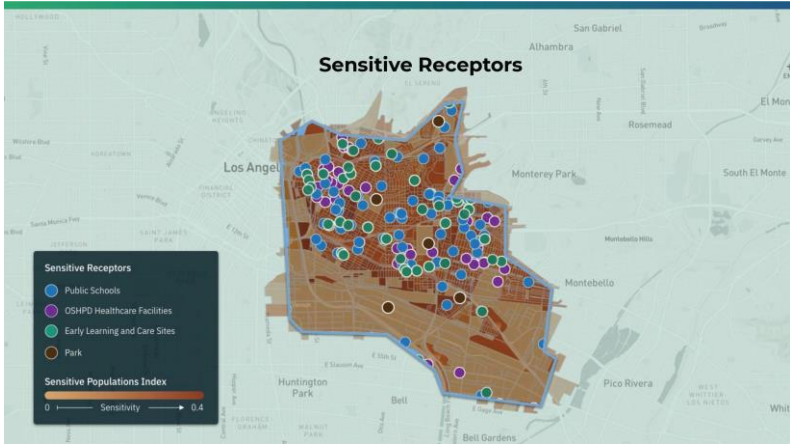


13

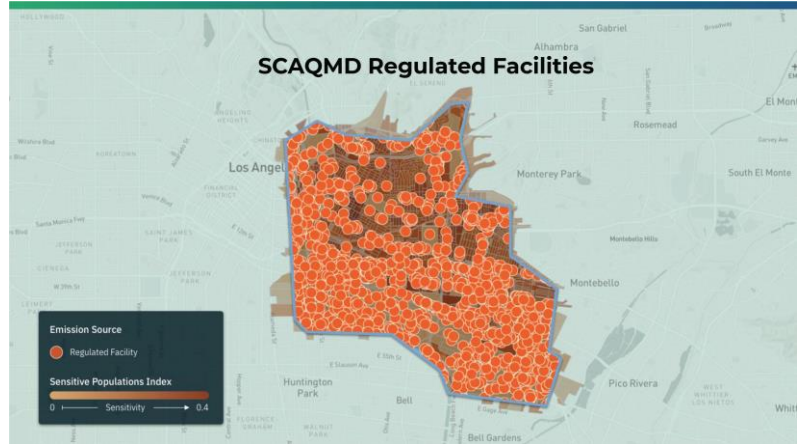
SECTION 01

Area Overview

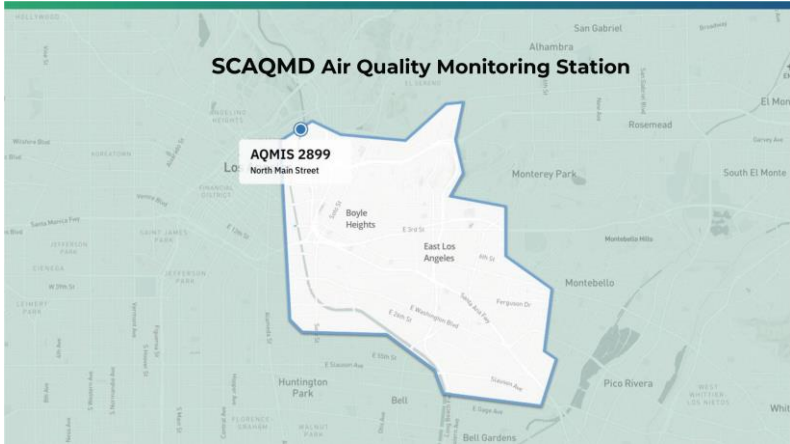
- Overall, how is the air quality in East Los Angeles/Boyle Heights/West Commerce (ELABHWC)?
- How are various pollutants concentrated within each?
- What areas warrant further investigation, analysis, or research?



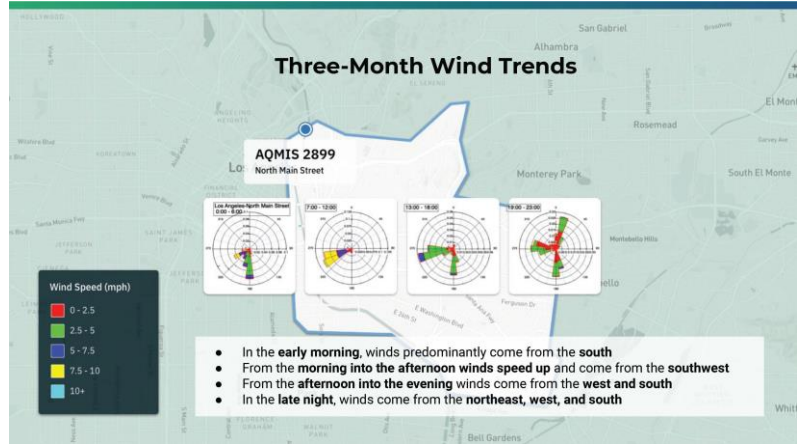
7



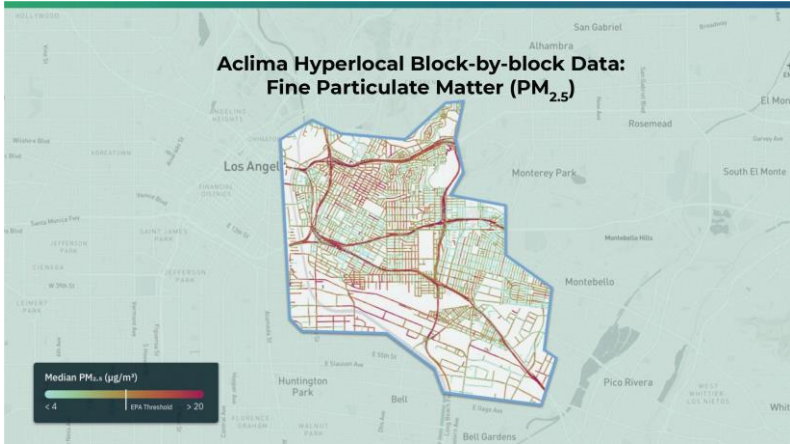
8



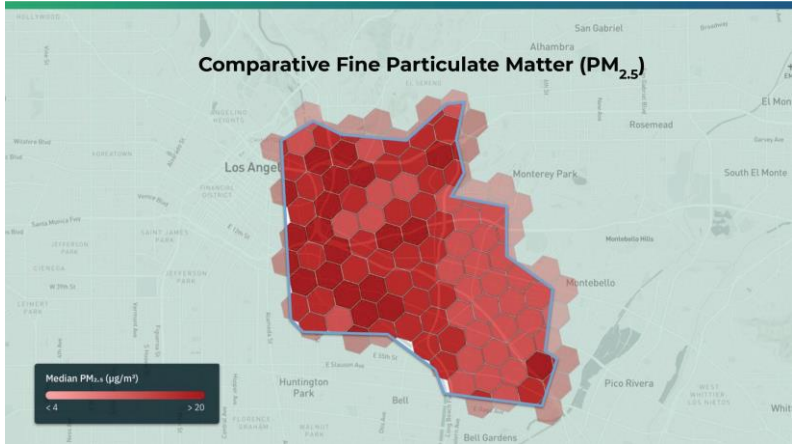
9



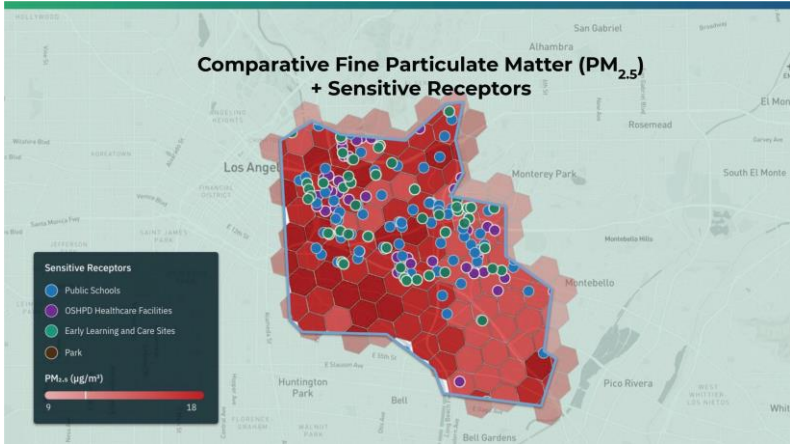
10



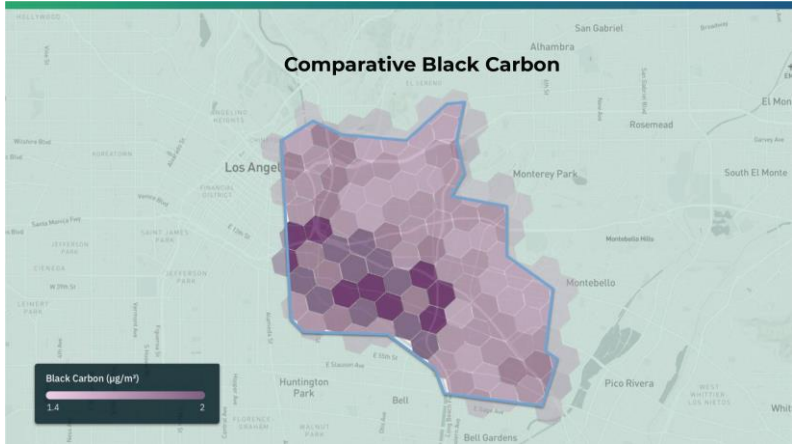
11



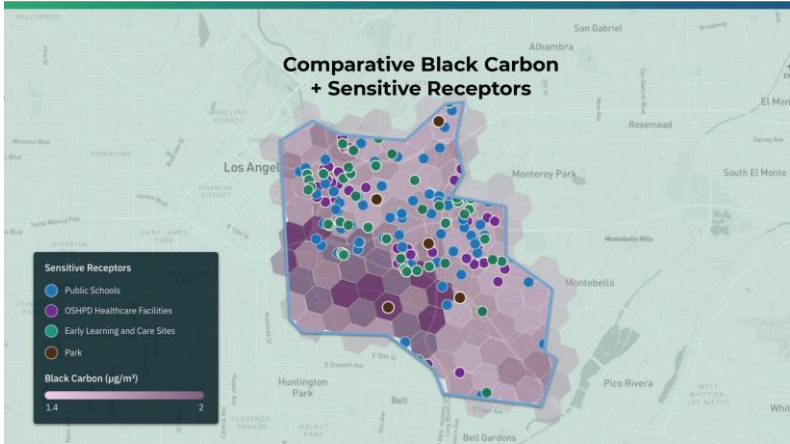
12



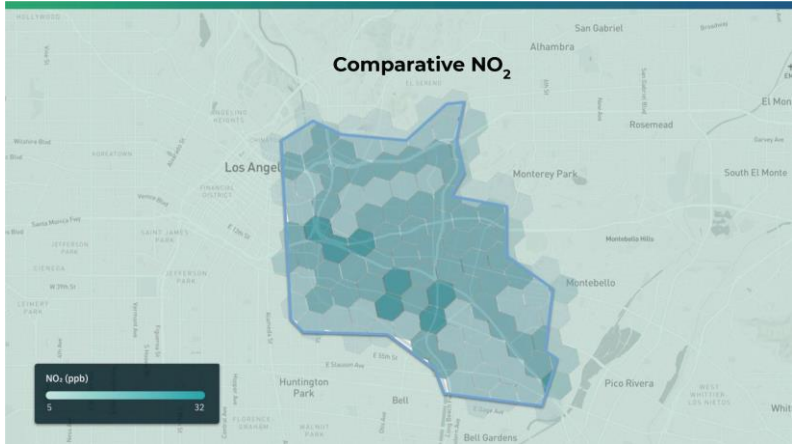
13



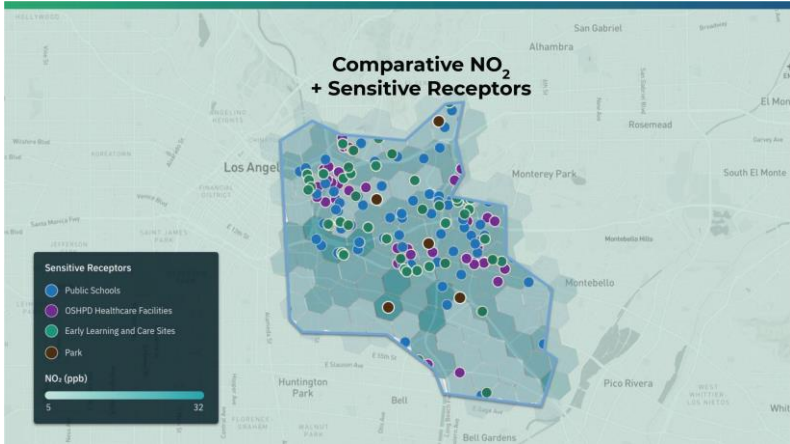
14



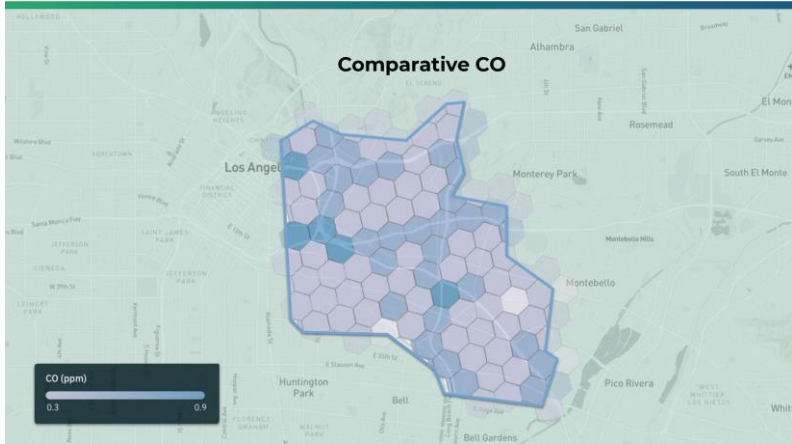
15



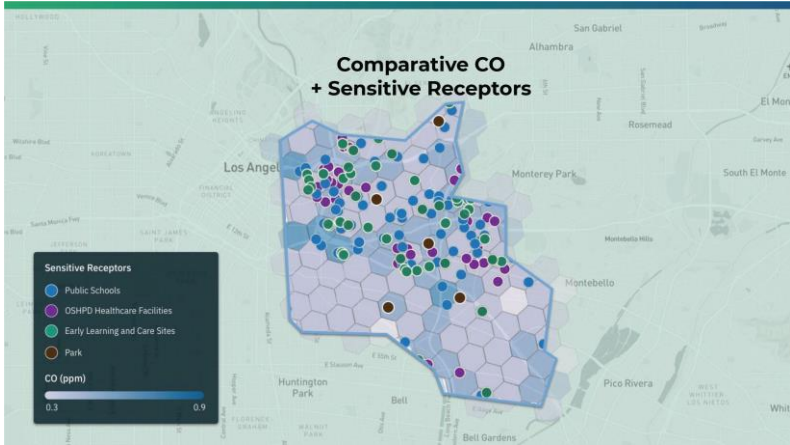
16



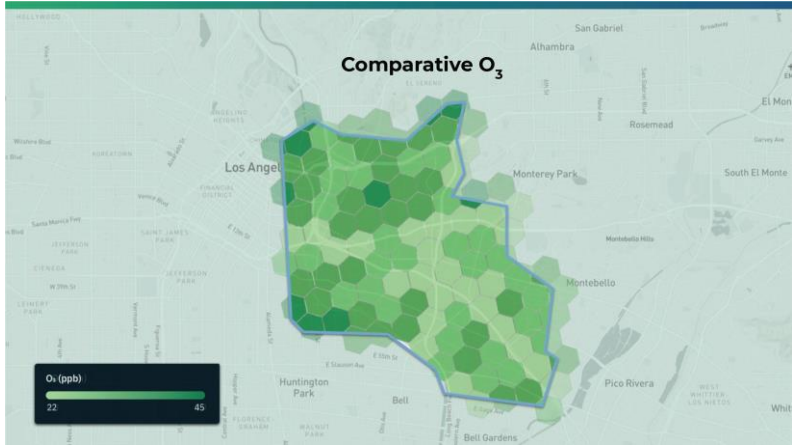
17



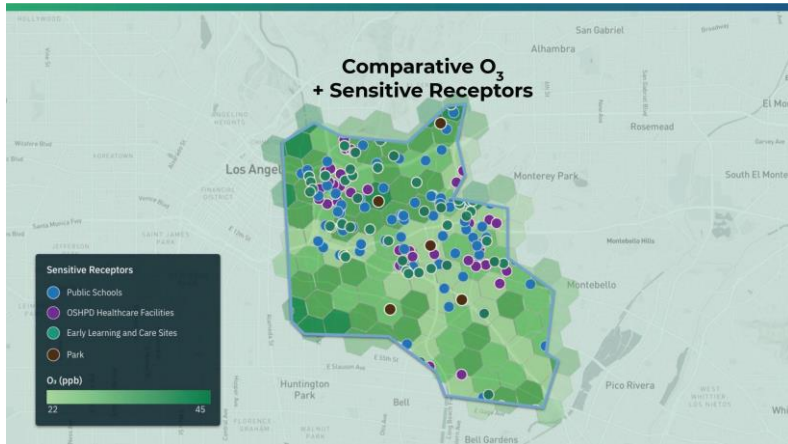
18



19



20



21

SECTION 02

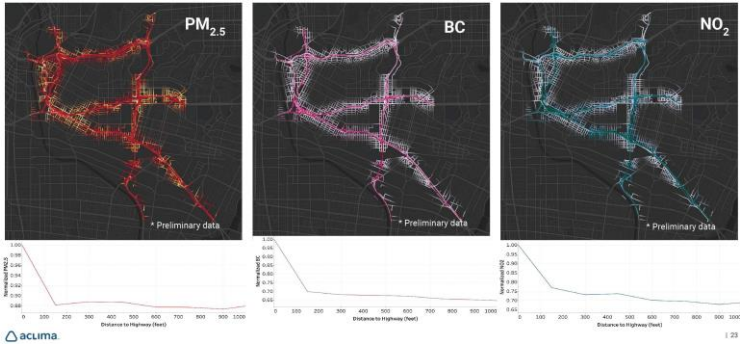
Transportation

- How do pollutant concentrations change with respect to distance from *highways* and *major roads*?
- How do they change with regard to distance from *railroads*?

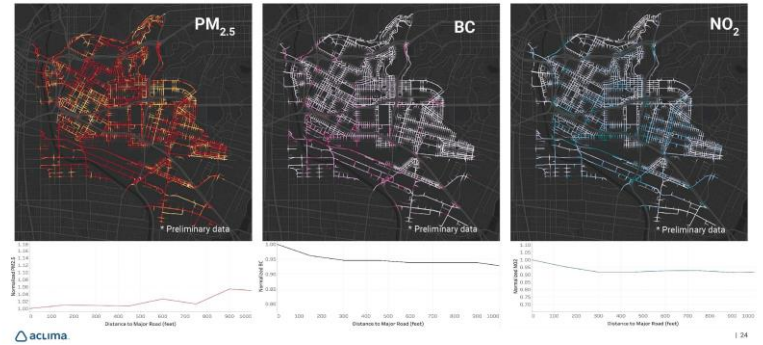
acLIMA

22

East LA Transportation Impact: Areas within 150 ft of a Highway

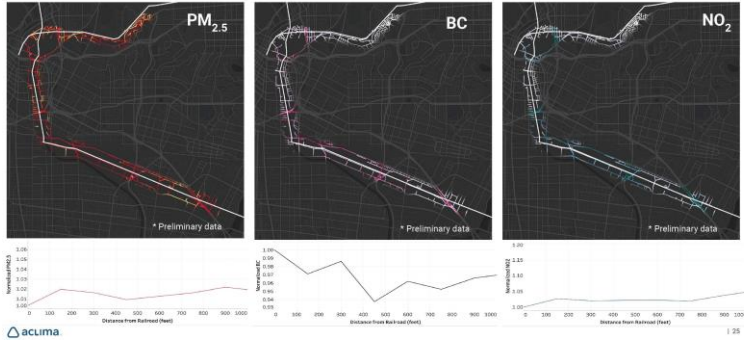


East LA Transportation Impact: Areas within 150 ft of a Major Road



Further, Faster, Together | Acuma Environmental Intelligence

East LA Transportation Impact: Areas within 150 ft of a Railroad



25

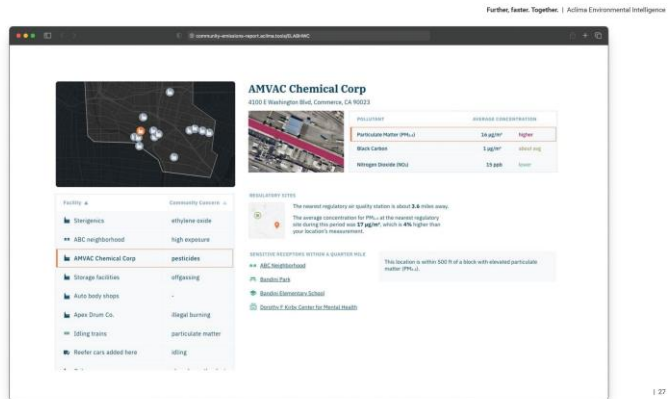
SECTION 03

Stationary Facilities / Fixed Sources

- What is the typical air quality like near a given facility?
- What sensitive receptors are nearby?
- Are there pollution hotspots nearby?

acuma

26



27

SECTION 04

Sensitive Receptors

- What is the typical air quality experienced at sensitive locations?
- What emission sources are nearby?
- Are there pollution hotspots nearby?

acuma

28

Further, Together | Acuma Environmental Intelligence

Ramona Gardens Recreation Center,
2830 Lancaster Ave, Los Angeles, CA 90033

POLLUTANT	AVERAGE CONCENTRATION
Particulate Matter (PM _{2.5})	14 µg/m ³ High
Black Carbon	7 µg/m ³ about avg
Nitrogen Dioxide (NO ₂)	35 ppb about avg

REGULATORY SITES
The nearest regulatory air quality station is about 8.2 miles away. The average concentration for PM_{2.5} at the nearest regulatory site during this period was 50 µg/m³, which is 36% lower than your location's measurement.

NEARBY BY DISTANCE WITHIN A QUARTER MILE
This location is within 500 ft of a block with elevated particulate matter (PM_{2.5}).

NEARBY SITES

- Universal Community Health... Health
- ABC Neighborhood Neighborhood
- Ramona Gardens Recreation... Community Center**
- Bardiel Park Park
- Los Angeles Community He... Health
- Avonon Dialysis Health
- Vernon City Elementary School
- Childtime Children's Center Childcare

acuma

29

SECTION 05

Address Look-up

- What is the typical air quality like for a given location?
- How does that compare to regulatory sites?
- Is this location near a hotspot?
- What known emission sources are nearby?

acuma

30

Further. Faster. Together. | Acima Environmental Intelligence

ADDRESS UNKNOWN
Enter an ELAB/WC, SBM, or Basemat / Associated Heights address to generate a custom report.

2317 S Atlantic Blvd, Compton, CA 90226

East Yard Communities 4 Environmental Justice

2317 S Atlantic Blvd, Compton, CA 90226

POLLUTANT	AVERAGE CONCENTRATION
Particulate Matter (PM _{2.5})	13 µg/m ³ higher
Black Carbon	7 µg/m ³ about avg
Nitrogen Dioxide (NO ₂)	27 ppb about avg

REGULATORY SITES
The nearest regulatory air quality station is about 0.5 miles away. The average concentration for PM_{2.5} at the nearest regulatory site during this period was 34 µg/m³, which is 45% higher than your location's measurement.

NUMBER OF INDUSTRY SITES IN QUARTER MILE
 10 Gasoline Stations
 1 Auto Body Shops
 1 Auto Detail Co.
 11 Dry Cleaners

This location is within 500 ft of a block with elevated particulate matter (PM_{2.5}).

acima

31

SECTION 06

Early Stage VOC Analysis

acima

32

VOC peaks near City Terrace

Farber, Foster, Together | Acima Environmental Intelligence



33

Aerial view of a city with a semi-transparent green overlay. The text reads: **THANK YOU.**
We want your feedback!
Please complete this quick survey:
<https://forms.gle/Svut5Gv5UzTLdTmf6>
The Acima logo is in the bottom left corner.

34