

SCAQMD's EJ Analysis & Abt Recommendation

Elaine Shen, Ph.D.

**Program Supervisor—Socioeconomic Analysis
Planning, Rule Development and Area Sources**

2016 AQMP – Socioeconomic Assessment

Environmental Justice Working Group

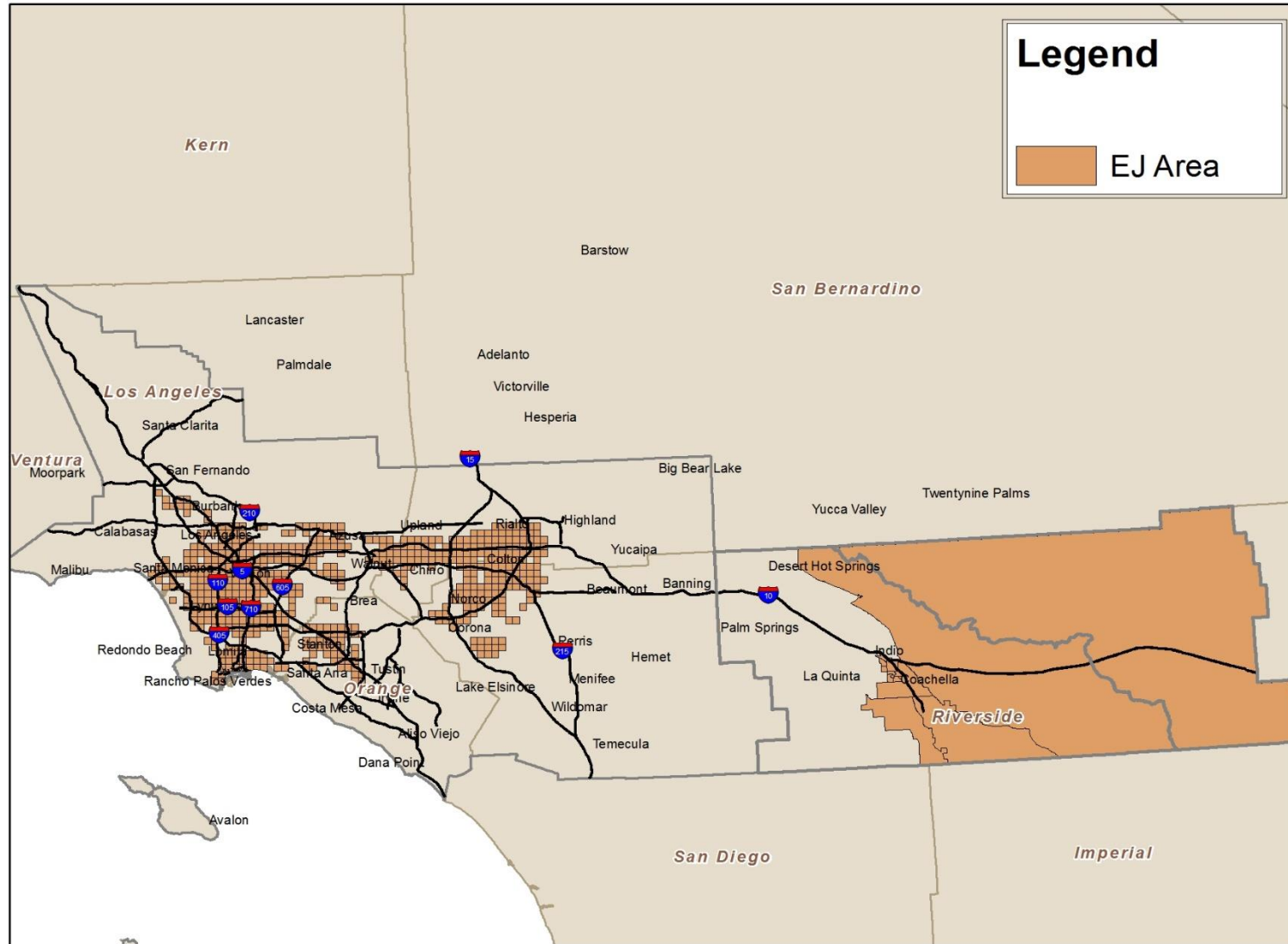
April 16, 2016

SCAQMD's EJ Areas Definition for *Grant Distribution*

EJ area is defined consistent with the Carl Moyer and AB1318, as follows:

- Poverty Criteria
 - An area where at least 10% of the population falls below the Federal poverty level based on the most recently published American Community Survey (ACS) data **AND**
- Air Quality Criteria
 - SoCAB (Carl Moyer)
 - The highest 15th percentile of PM_{2.5} OR
 - The highest 15th percentile of cancer risk from MATES
 - Coachella Valley (AB1318)
 - The highest 15th percentile of PM₁₀ concentration

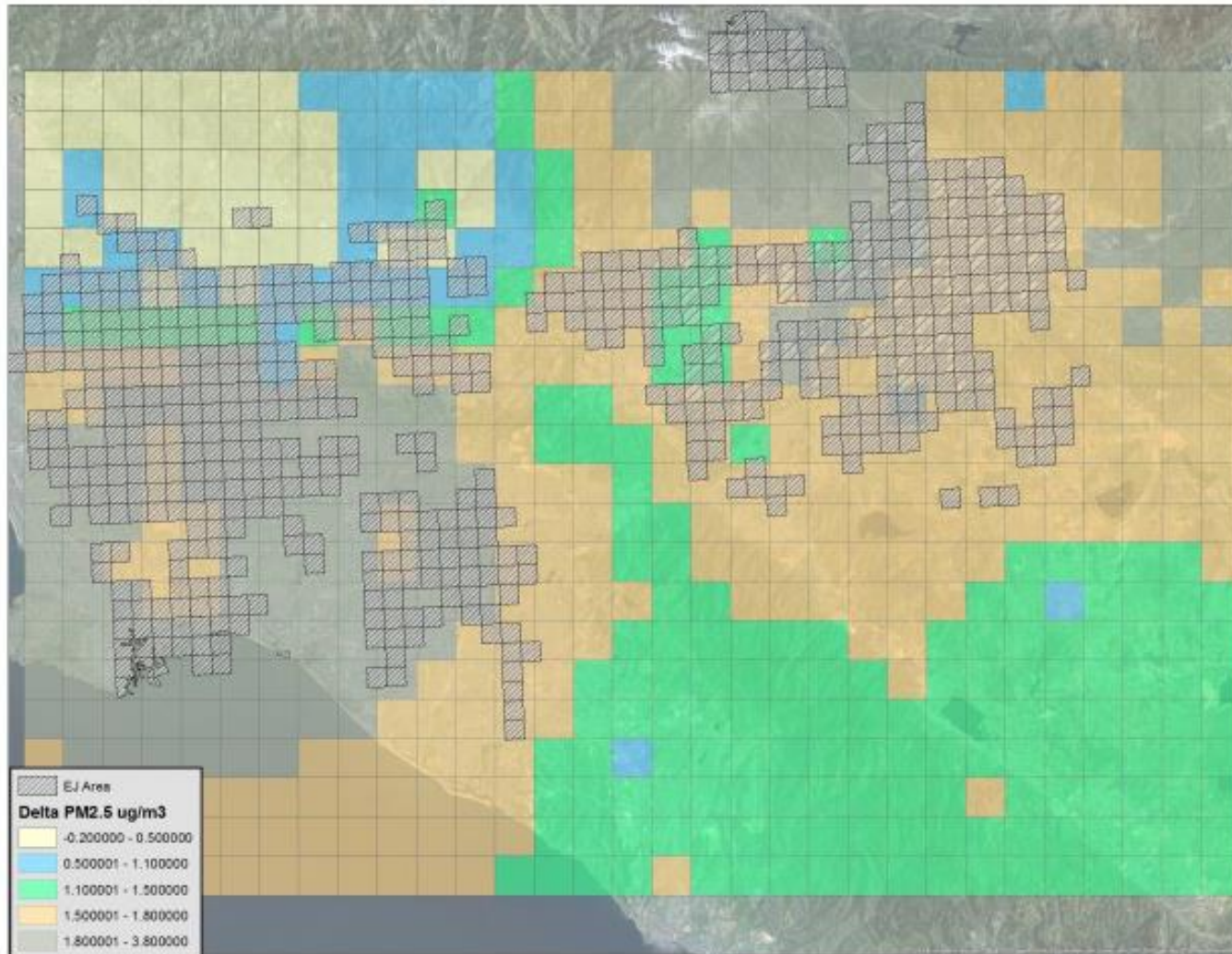
SCAQMD's EJ Areas Definition for *Grant Distribution*



2012 AQMP Socioeconomic Assessment

FIGURE 5-1

Impact of 2014 Change in 24-Hour $PM_{2.5}$ Concentrations on EJ Areas



2014 Abt Recommendations on EJ

- Institute a systematic process of literature review (e.g., epidemiological studies, valuation studies, job impact assessment, EJ analysis, visibility studies)
- Expand environmental justice analysis
 - EJ screening analysis to identify “hotspots”
 - Further analysis to assess policy impact

(Source: Abt presentation to the SCAQMD Governing Board on November 7, 2014.)